



**DECONYX**<sup>TM</sup>  
The Unbreakable Elegance

*Feel Natural...*

Luxuriously Unique Translucent Sheets



## Index

1) Premium Stone Series	4-25
2) Premium Wooden Series	26-55
3) L-Patti	56
4) Lighting Automation	57
5) Specifications	58
6) Installation Guide	59-60



First manufacturing unit to produce Exterior and Interior Grade, upgraded alabaster. As it is a non-breakable, used for Exteriors and Interiors, We can apply in huge quantity in any concept.

The best Characteristics of alabaster is that it can transmit light and has various styles and designs, It looks natural with good feel effect and is easy to install. It has advantage of being bent and has seamless joint property too. "Deconyx" is the only company in the world to produce exterior grade alabaster. Colourful architectural surface in Rustic finish is always the like of architects and we give our best to fulfil their needs. The elegance, design and quality really express the beauty of "Deconyx" material. Our upgraded technology and techniques offer visual perfection and easy in installation material for exterior and interior surface beautification. Transportation problem has no place in "Deconyx".

"Deconyx" has a dream to provide unique and monopoly products. A lot of new products are in pipeline. Quality and service are both hands of "Deconyx".

### Features:

- Backlit Application
- Aesthetic
- Natural Look
- Highly Chemical Resistant
- Available in many Designs
- Approx Size 8'x4'
- A Versatile, Robust & Hygienic Surface
- High Resistance to External Stress  
(Abrasion, Impacts, Stains etc.)
- Non Porous, Waterproof Surface

### Applications:

- |                |                    |
|----------------|--------------------|
| ● Hotel        | ● Multiplex        |
| ● Resort       | ● Showroom         |
| ● Restaurant   | ● Corporate office |
| ● Bar          | ● Spa              |
| ● Cafeteria    | ● Beauty salon     |
| ● Club house   | ● Gazebo           |
| ● Banquet hall | ● Elevator         |
| ● Mall         | ● Residence        |

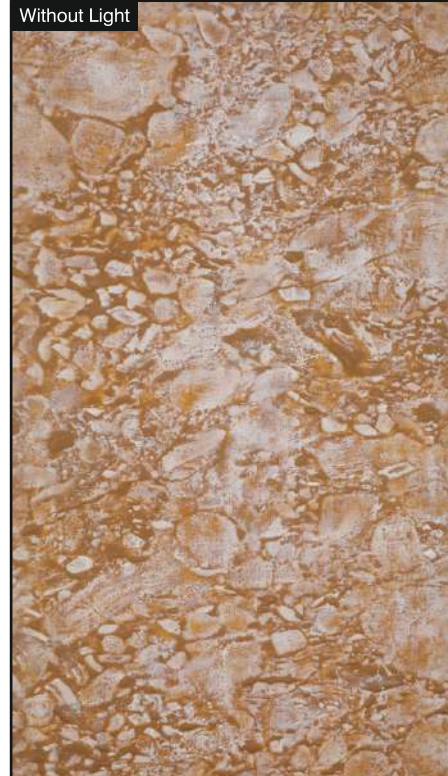


**COVERING NEW ENVIRONMENTS, WITH LAST GENERATION MATERIALS BEYOND YOUR DREAMS.**

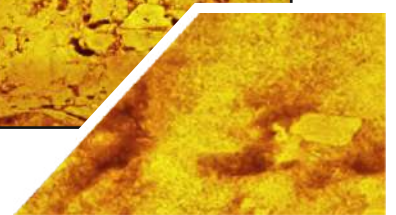
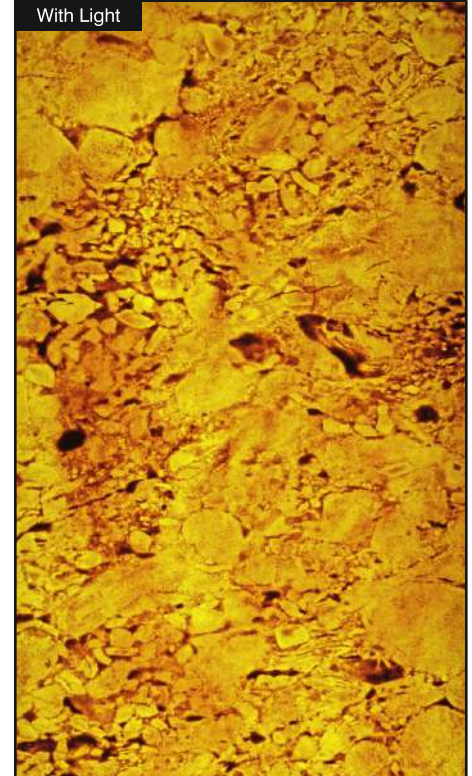
## Cake Shop



Without Light



With Light



**PS-101**

Size:  
4' x 8' (1220mm x 2440mm)  
(+/- 5mm)

Thickness:  
Approx 4mm

- Natural Feel
- Stone Cladding
- Rustic Surface



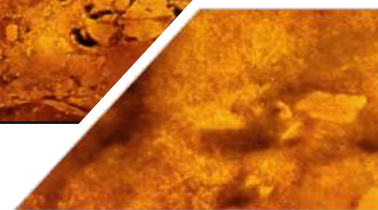
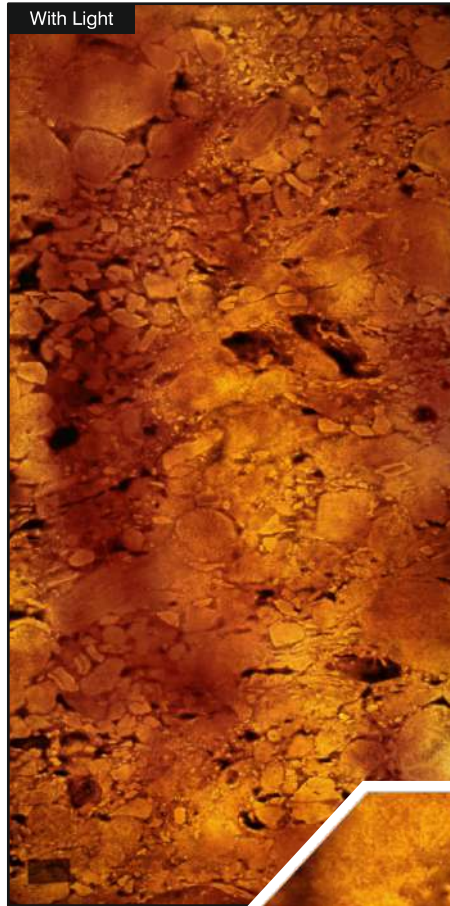
## Villa



Without Light



With Light



**PS-102**

Size:  
4' x 8' (1220mm x 2440mm)  
(+/- 5mm)

Thickness:  
Approx 4mm

- Natural Feel
- Stone Cladding
- Rustic Surface



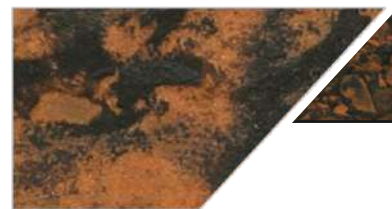
## Escalators



Without Light



With Light



**PS-103**

Size:  
4' x 8' (1220mm x 2440mm)  
(+/- 5mm)

Thickness:  
Approx 4mm

- Natural Feel
- Stone Cladding
- Rustic Surface



## Living Room



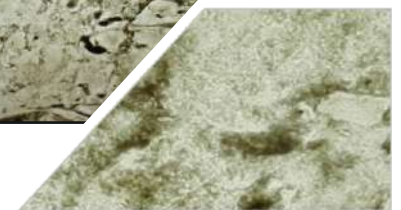
Without Light



With Light



**PS-104**



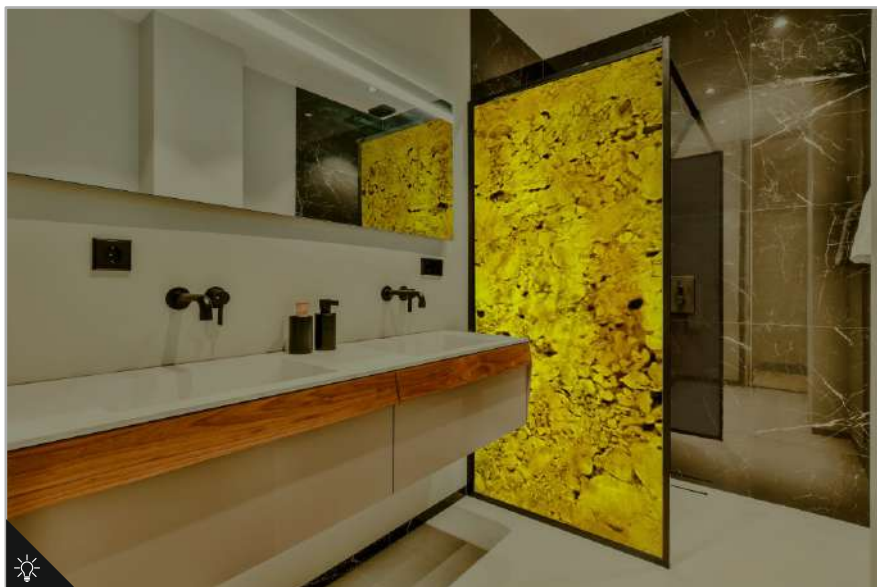
Size:  
4' x 8' (1220mm x 2440mm)  
(+/- 5mm)

Thickness:  
Approx 4mm

- Natural Feel
- Stone Cladding
- Rustic Surface



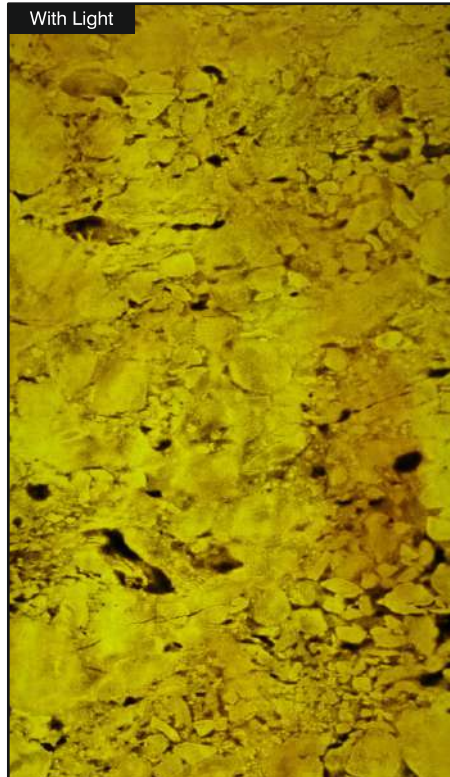
## Bathroom Partition



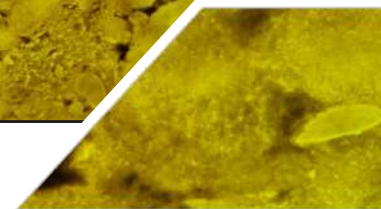
Without Light



With Light



**PS-105**



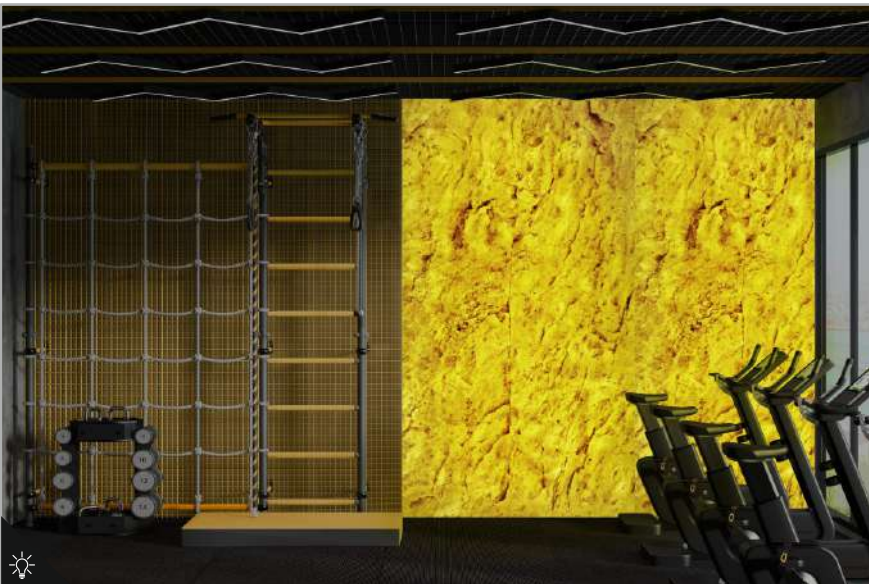
Size:  
4' x 8' (1220mm x 2440mm)  
(+/- 5mm)

Thickness:  
Approx 4mm

- Natural Feel
- Stone Cladding
- Rustic Surface



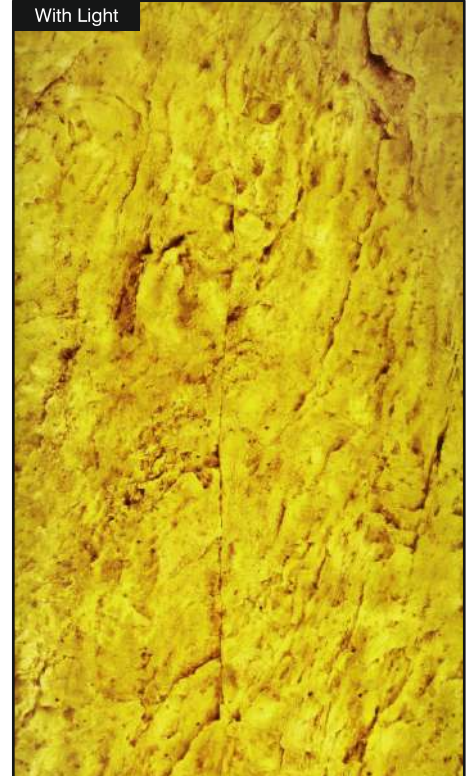
## Gym



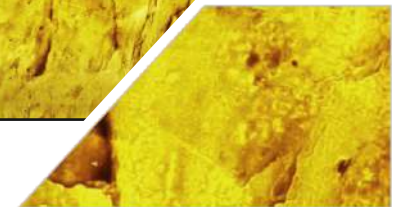
Without Light



With Light



**PS-201**



Size:  
4' x 8' (1220mm x 2440mm)  
(+/- 5mm)

Thickness:  
Approx 4mm

- Natural Feel
- Stone Cladding
- Rustic Surface



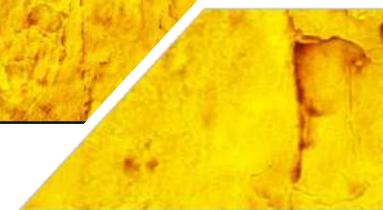
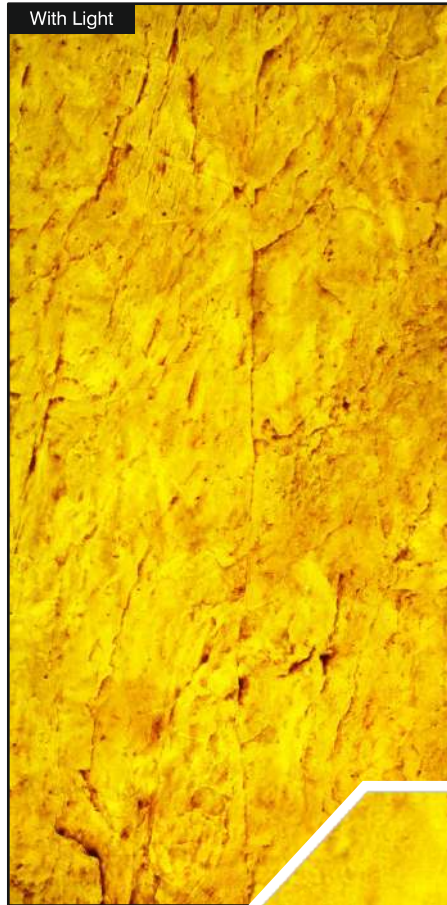
## Gym



Without Light



With Light



**PS-202**

Size:  
4' x 8' (1220mm x 2440mm)  
(+/- 5mm)

Thickness:  
Approx 4mm

- Natural Feel
- Stone Cladding
- Rustic Surface





## Spa



Without Light



With Light



**PS-203**



Size:  
4' x 8' (1220mm x 2440mm)  
(+/- 5mm)

Thickness:  
Approx 4mm

- Natural Feel
- Stone Cladding
- Rustic Surface



## Bathroom



Without Light



With Light



**PS-204**



Size:  
4' x 8' (1220mm x 2440mm)  
(+/- 5mm)

Thickness:  
Approx 4mm

- Natural Feel
- Stone Cladding
- Rustic Surface



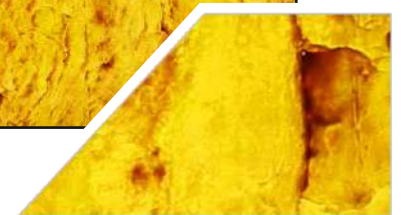
## Kitchen



Without Light



With Light



**PS-205**

Size:  
4' x 8' (1220mm x 2440mm)  
(+/- 5mm)

Thickness:  
Approx 4mm

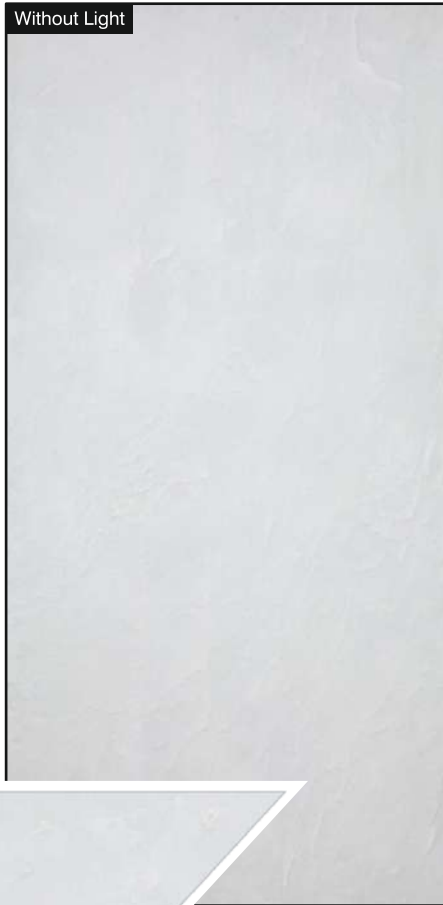
- Natural Feel
- Stone Cladding
- Rustic Surface



## Pooja Room



Without Light



With Light



**PS-206**

Size:  
4' x 8' (1220mm x 2440mm)  
(+/- 5mm)

Thickness:  
Approx 4mm

- Natural Feel
- Stone Cladding
- Rustic Surface



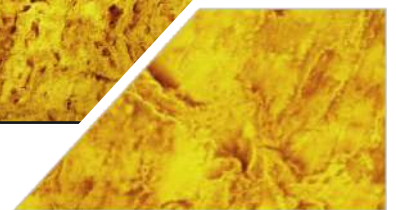
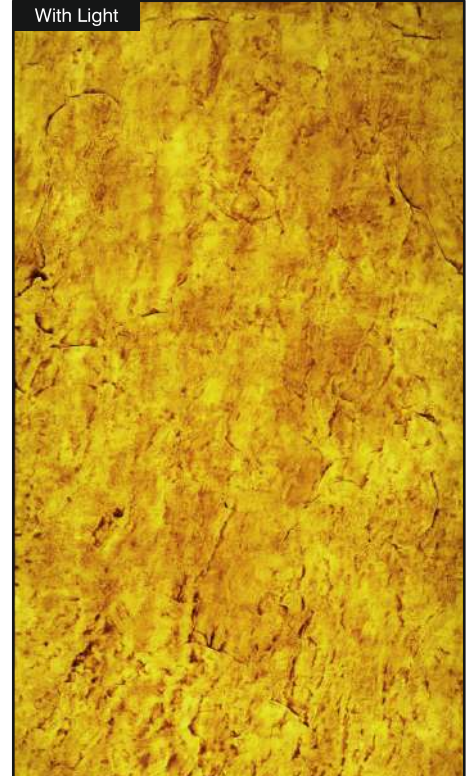
## Entry Gate



Without Light



With Light



**PS-301**

Size:  
4' x 8' (1220mm x 2440mm)  
(+/- 5mm)

Thickness:  
Approx 4mm

- Natural Feel
- Stone Cladding
- Rustic Surface



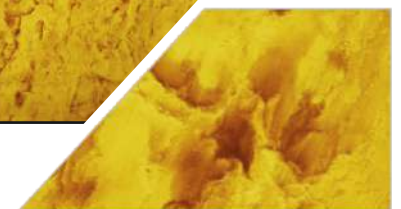
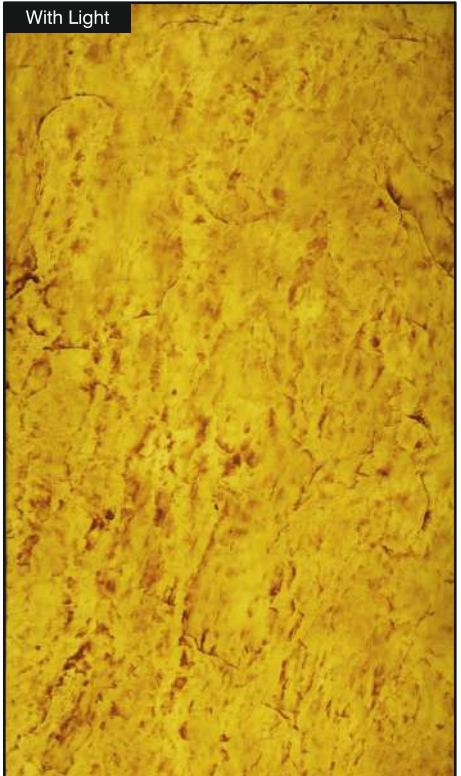
## Desk



Without Light



With Light



**PS-302**

Size:  
4' x 8' (1220mm x 2440mm)  
(+/- 5mm)

Thickness:  
Approx 4mm

- Natural Feel
- Stone Cladding
- Rustic Surface



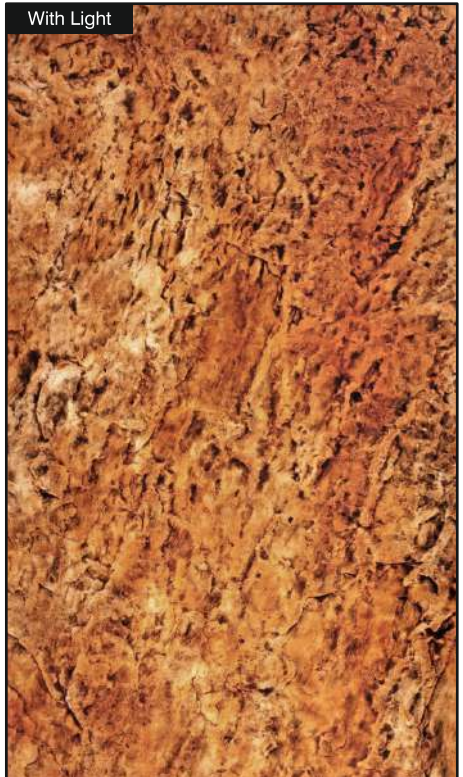
## Dressing Area



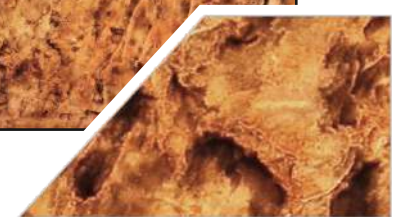
Without Light



With Light



**PS-303**



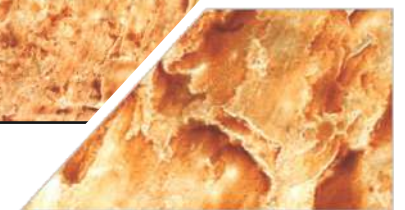
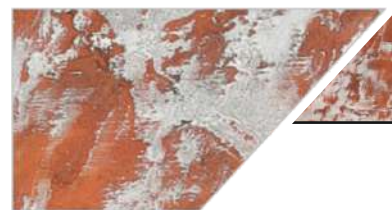
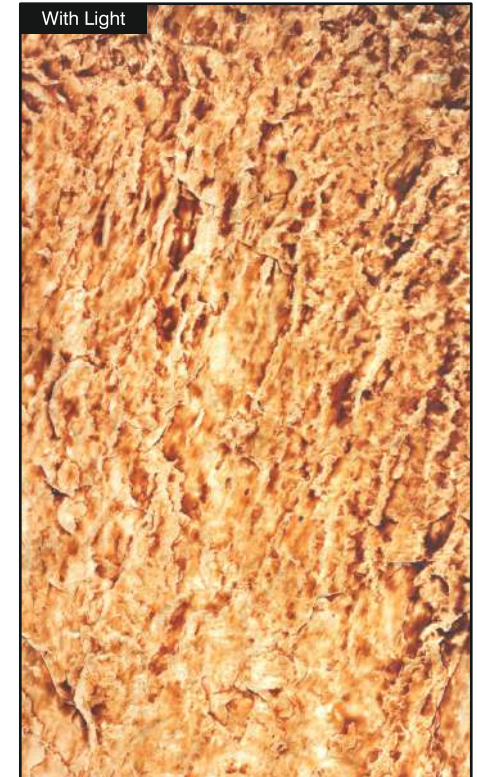
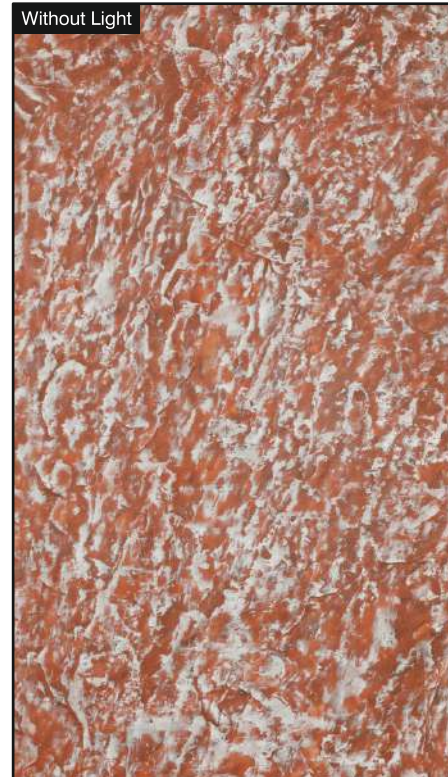
Size:  
4' x 8' (1220mm x 2440mm)  
(+/- 5mm)

Thickness:  
Approx 4mm

- Natural Feel
- Stone Cladding
- Rustic Surface



## Hotel



**PS-304**

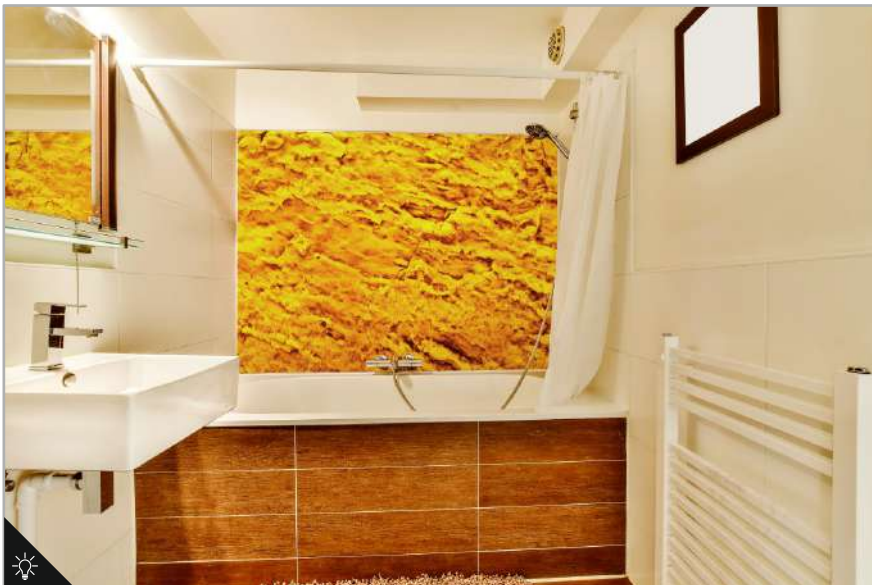
Size:  
4' x 8' (1220mm x 2440mm)  
(+/- 5mm)

Thickness:  
Approx 4mm

- Natural Feel
- Stone Cladding
- Rustic Surface



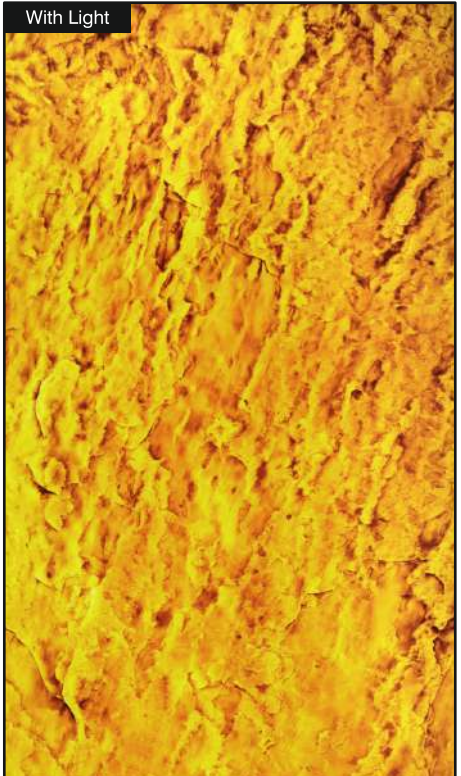
## Bathroom



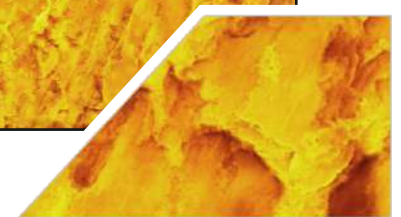
Without Light



With Light



**PS-305**



Size:  
4' x 8' (1220mm x 2440mm)  
(+/- 5mm)

Thickness:  
Approx 4mm

- Natural Feel
- Stone Cladding
- Rustic Surface



## Pooja Room



Without Light



With Light



**PS-306**



Size:  
4' x 8' (1220mm x 2440mm)  
(+/- 5mm)

Thickness:  
Approx 4mm

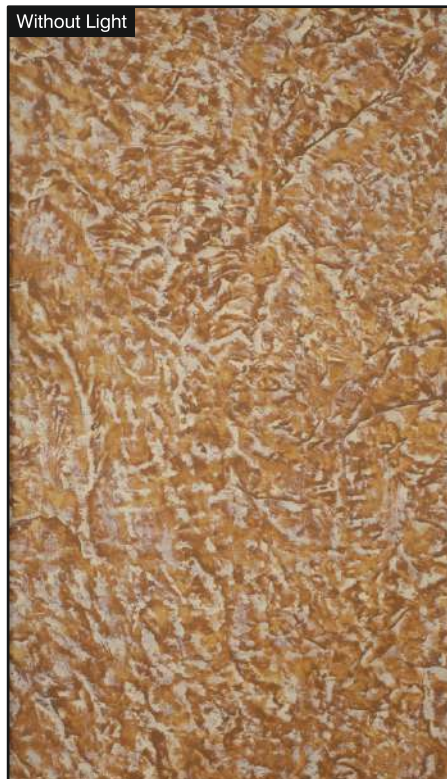
- Natural Feel
- Stone Cladding
- Rustic Surface



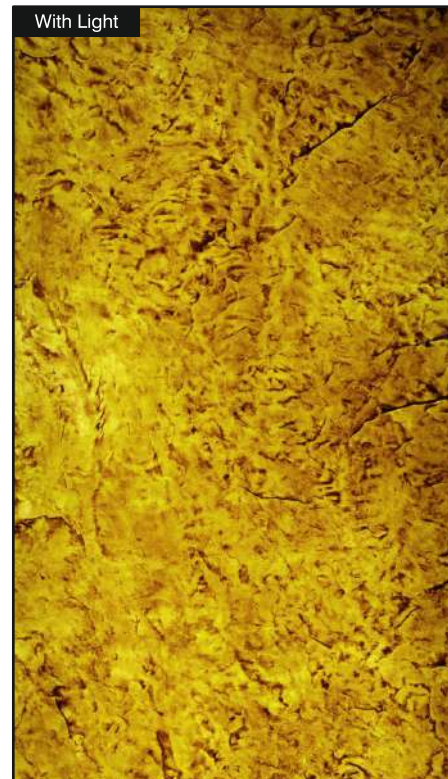
## Living Room



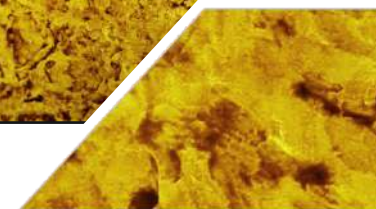
Without Light



With Light



**PS-401**



Size:  
4' x 8' (1220mm x 2440mm)  
(+/- 5mm)

Thickness:  
Approx 4mm

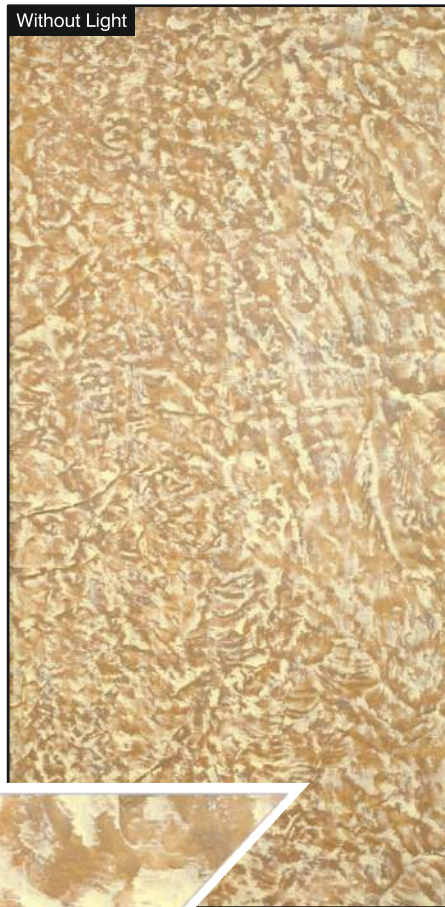
- Natural Feel
- Stone Cladding
- Rustic Surface



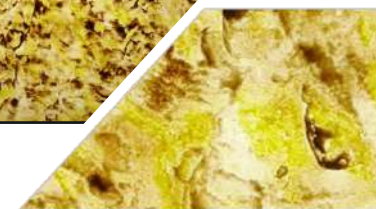
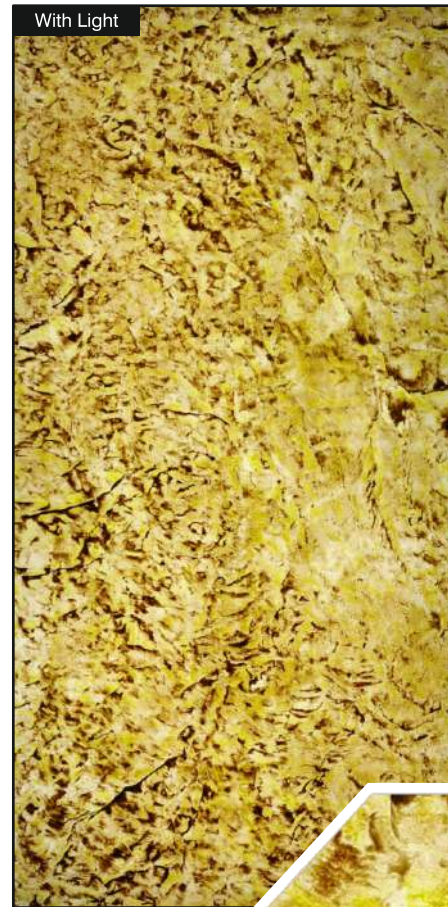
## Reception Backdrop



Without Light



With Light



**PS-402**

Size:  
4' x 8' (1220mm x 2440mm)  
(+/- 5mm)

Thickness:  
Approx 4mm

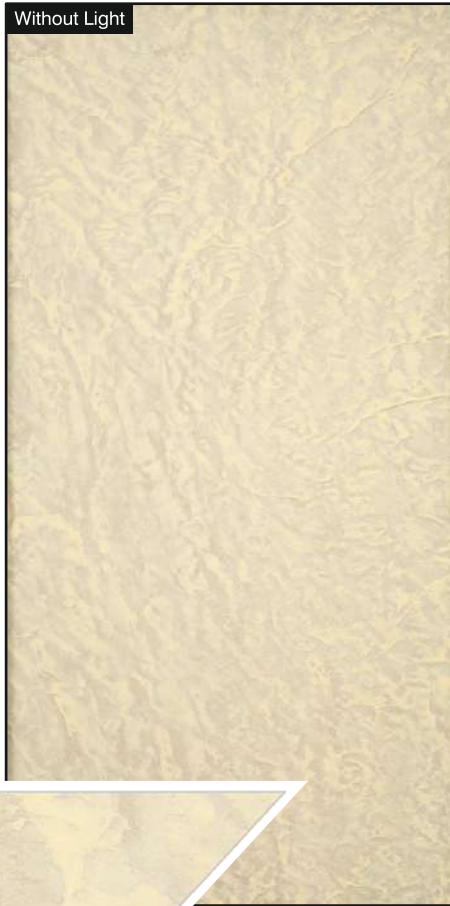
- Natural Feel
- Stone Cladding
- Rustic Surface



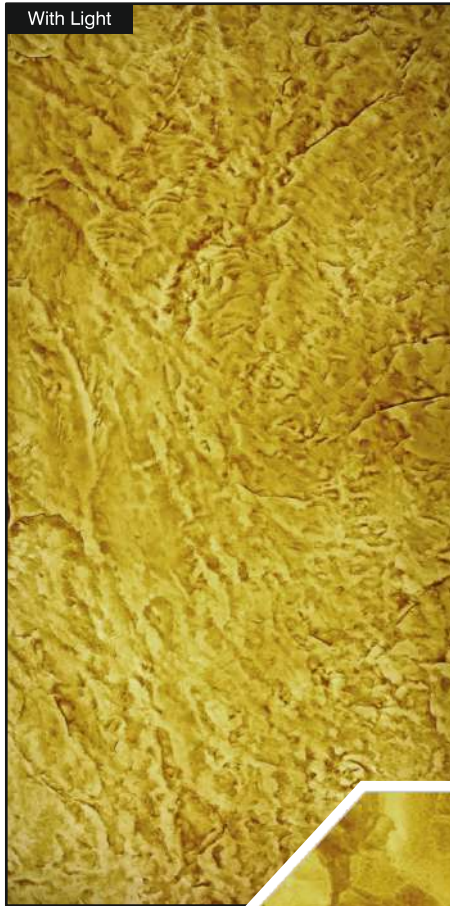
## Bedroom



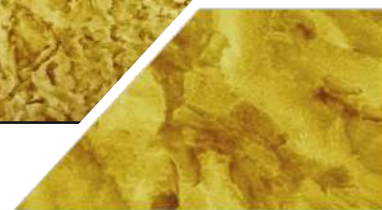
Without Light



With Light



**PS-403**



Size:  
4' x 8' (1220mm x 2440mm)  
(+/- 5mm)

Thickness:  
Approx 4mm

- Natural Feel
- Stone Cladding
- Rustic Surface



## Entry Gate



Without Light



With Light



**PS-404**



Size:  
4' x 8' (1220mm x 2440mm)  
(+/- 5mm)

Thickness:  
Approx 4mm

- Natural Feel
- Stone Cladding
- Rustic Surface



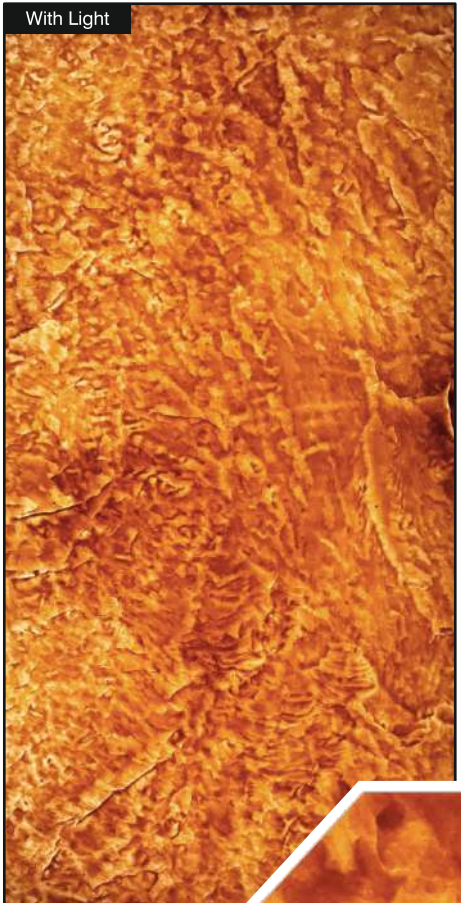
## Exterior wall



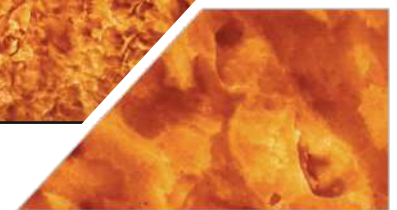
Without Light



With Light



**PS-405**



Size:  
4' x 8' (1220mm x 2440mm)  
(+/- 5mm)

Thickness:  
Approx 4mm

- Natural Feel
- Stone Cladding
- Rustic Surface



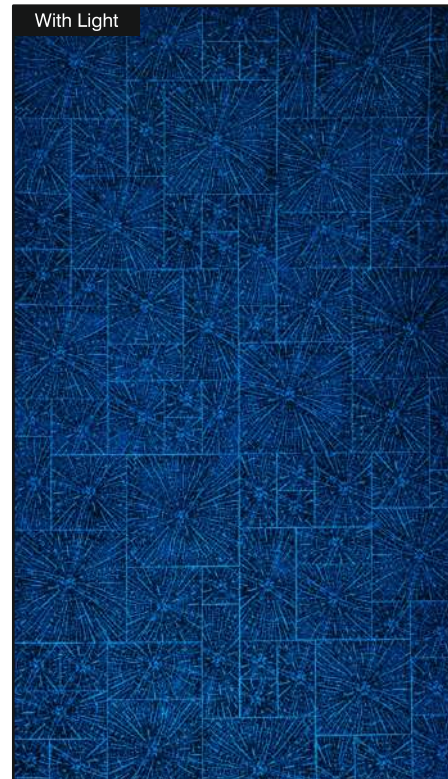
## Living Room



Without Light



With Light



**PW-101**



Size:  
4' x 8' (1220mm x 2440mm)  
(+/- 5mm)

Thickness:  
Approx 4mm

- Natural Feel
- Stone Cladding
- Rustic Surface



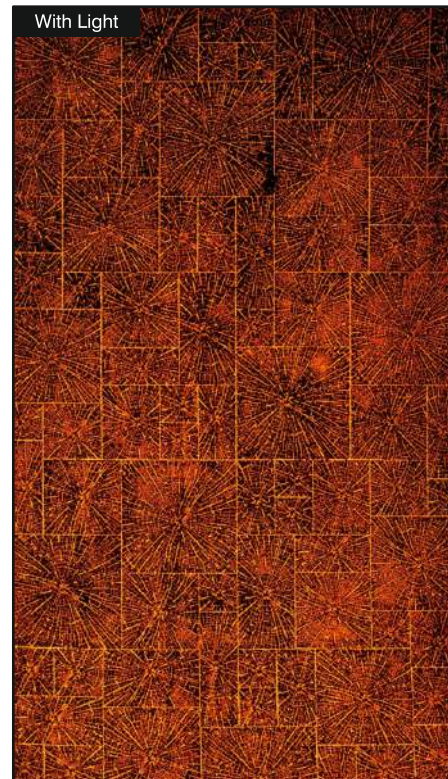
## Drawing Room



Without Light



With Light



**PW-102**

Size:  
4' x 8' (1220mm x 2440mm)  
(+/- 5mm)

Thickness:  
Approx 4mm

- Natural Feel
- Stone Cladding
- Rustic Surface



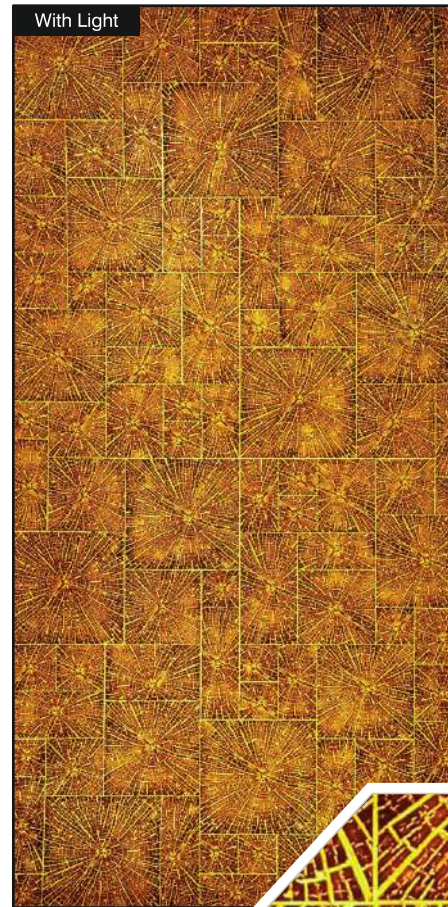


## Pylon Signage

Without Light



With Light



**PW-103**

Size:  
4' x 8' (1220mm x 2440mm)  
(+/- 5mm)

Thickness:  
Approx 4mm

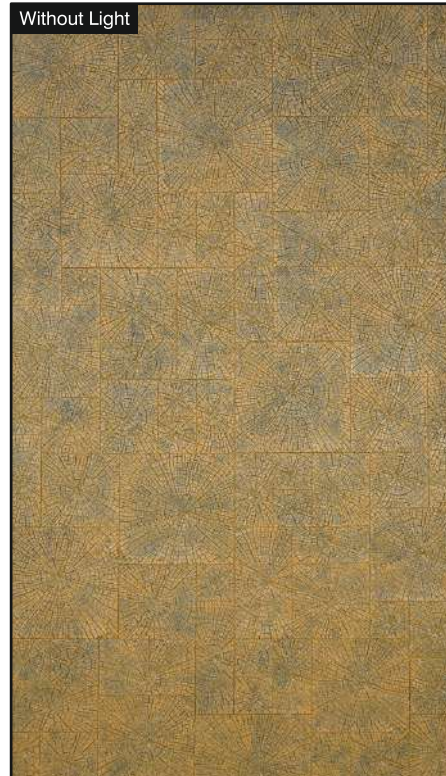
- Natural Feel
- Stone Cladding
- Rustic Surface



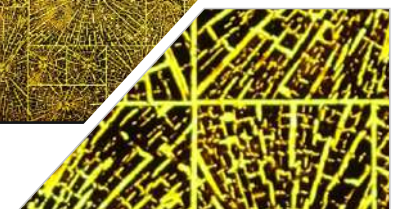
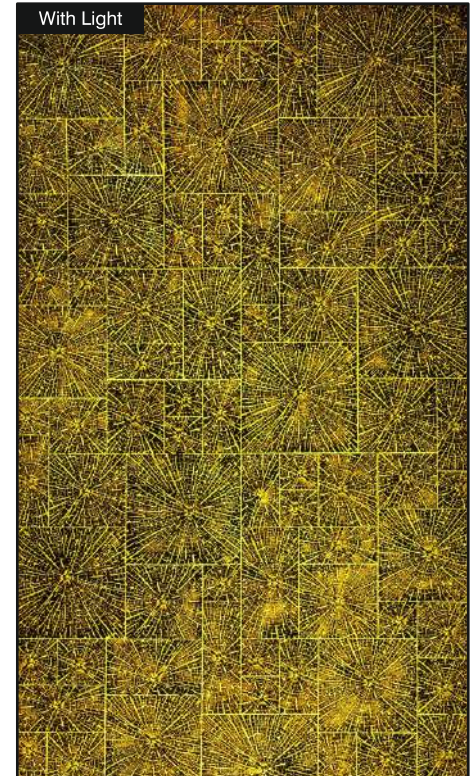
## Resort



Without Light



With Light



**PW-104**

Size:  
4' x 8' (1220mm x 2440mm)  
(+/- 5mm)

Thickness:  
Approx 4mm

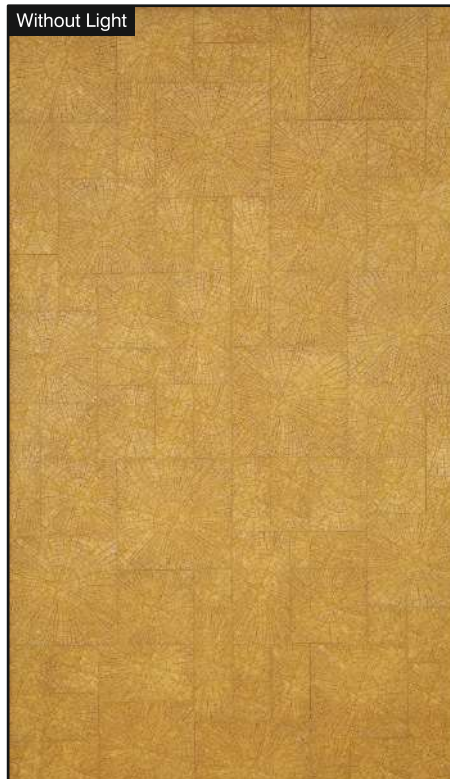
- Natural Feel
- Stone Cladding
- Rustic Surface



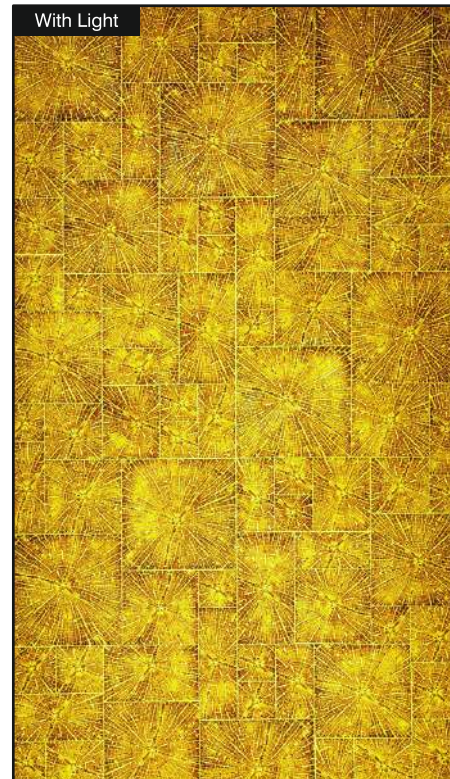
## Drawing Room



Without Light



With Light



**PW-105**

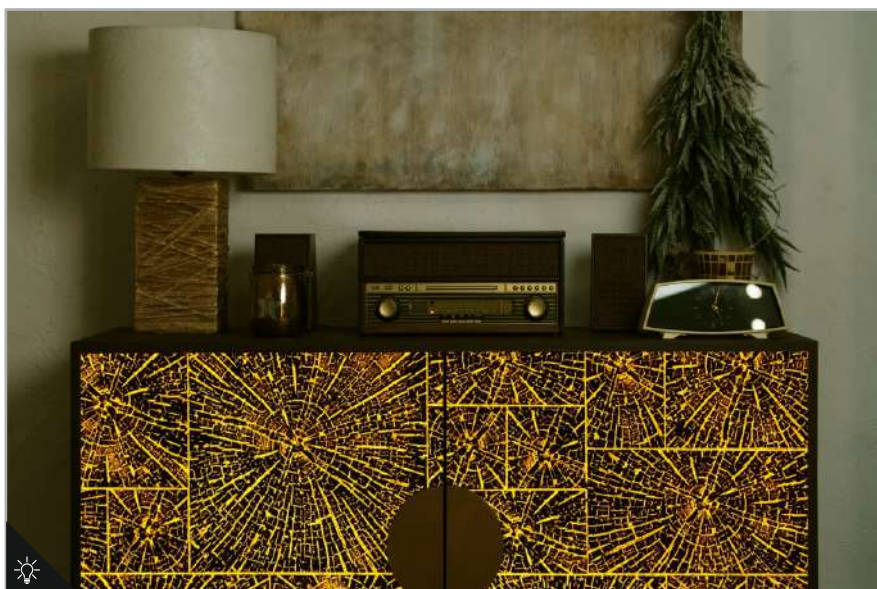
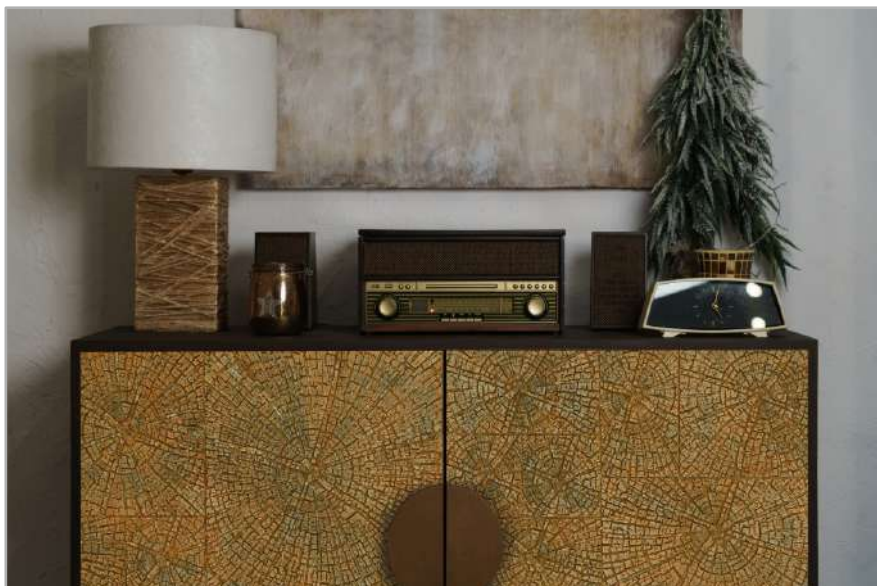
Size:  
4' x 8' (1220mm x 2440mm)  
(+/- 5mm)

Thickness:  
Approx 4mm

- Natural Feel
- Stone Cladding
- Rustic Surface



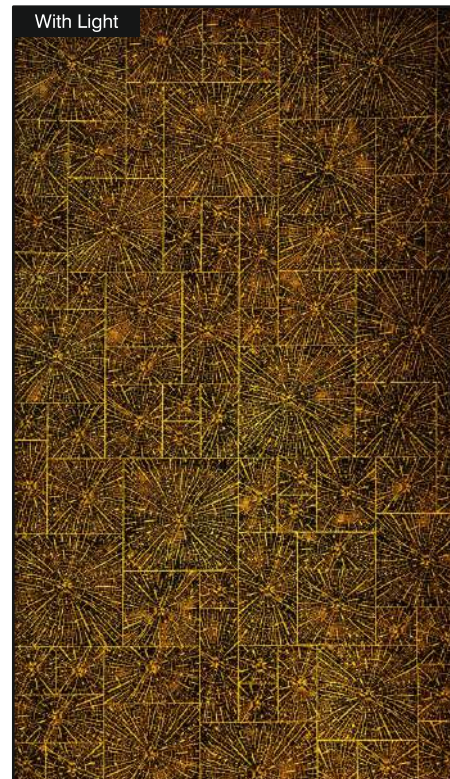
## Cabinet



Without Light



With Light



**PW-106**

Size:  
4' x 8' (1220mm x 2440mm)  
(+/- 5mm)

Thickness:  
Approx 4mm

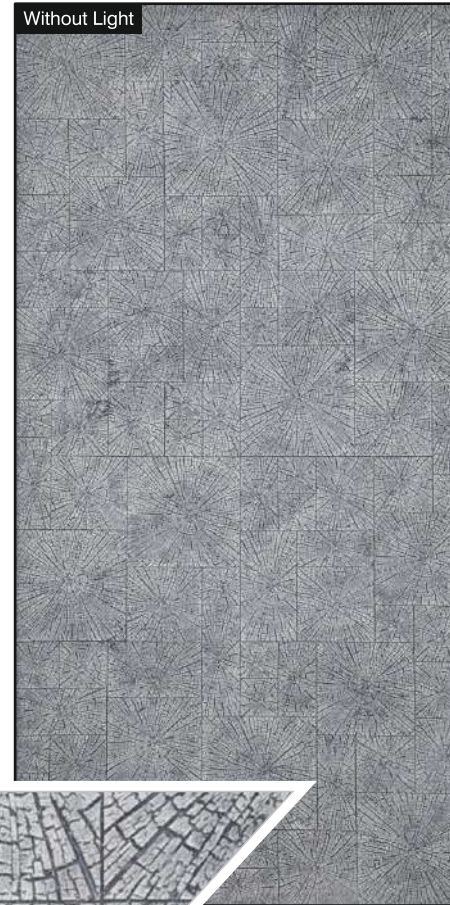
- Natural Feel
- Stone Cladding
- Rustic Surface



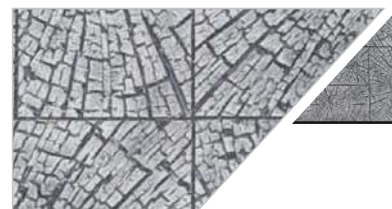
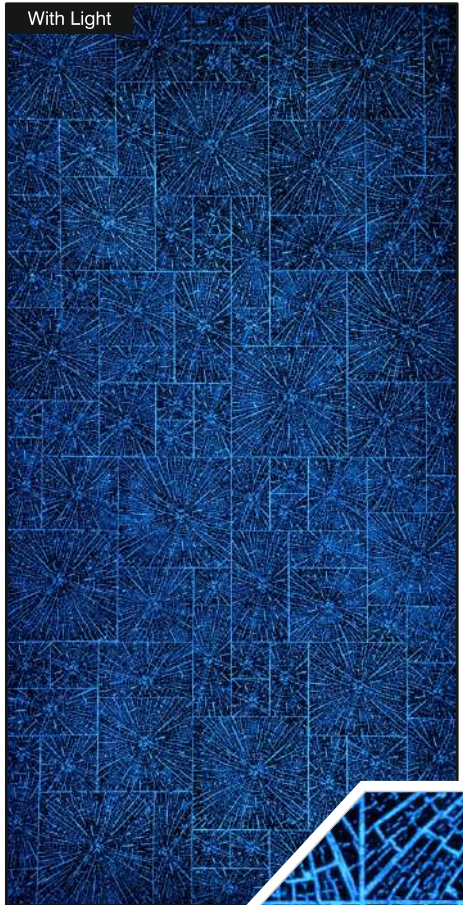
## Bedroom



Without Light



With Light



**PW-107**

Size:  
4' x 8' (1220mm x 2440mm)  
(+/- 5mm)

Thickness:  
Approx 4mm

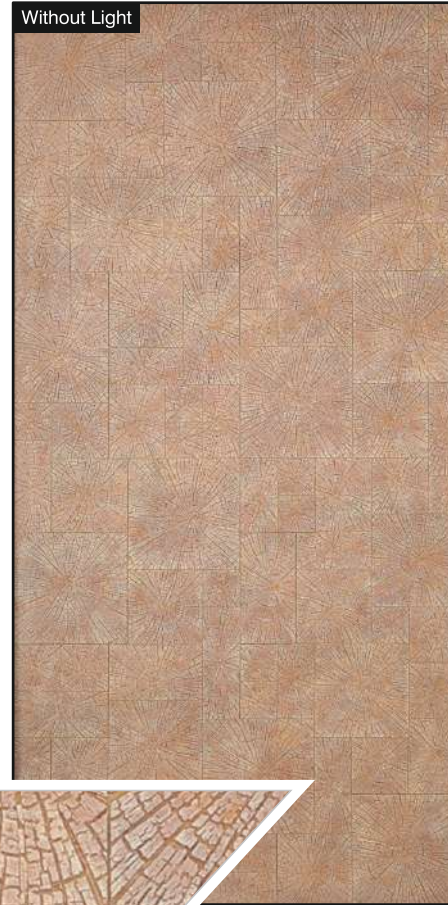
- Natural Feel
- Stone Cladding
- Rustic Surface



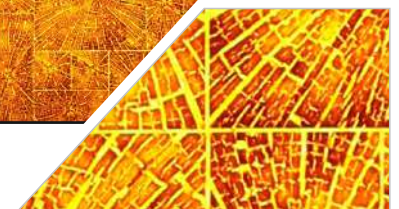
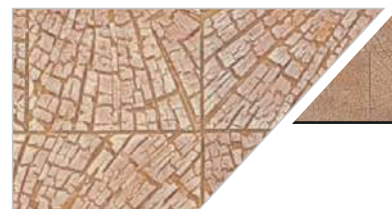
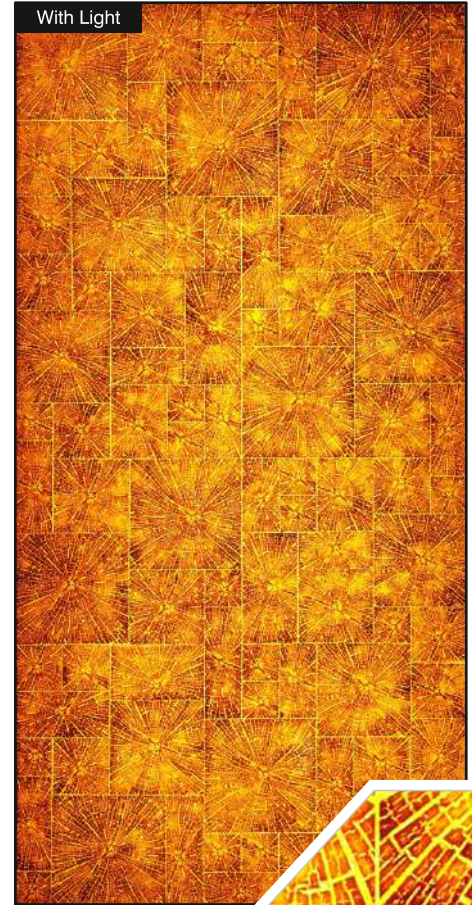
## Meeting Area



Without Light



With Light



**PW-108**

Size:  
4' x 8' (1220mm x 2440mm)  
(+/- 5mm)

Thickness:  
Approx 4mm

- Natural Feel
- Stone Cladding
- Rustic Surface



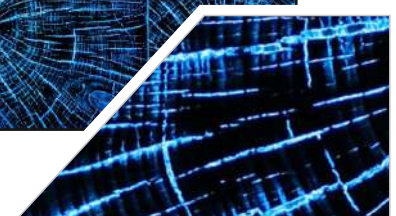
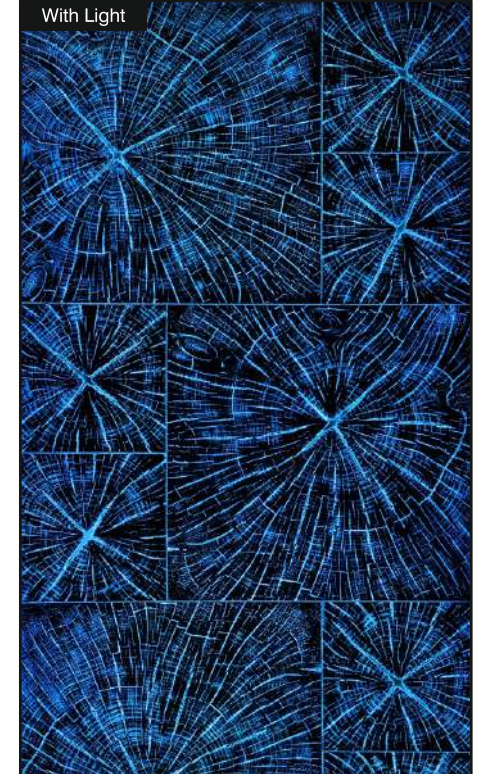
## Hotel



Without Light



With Light



**PW-201**

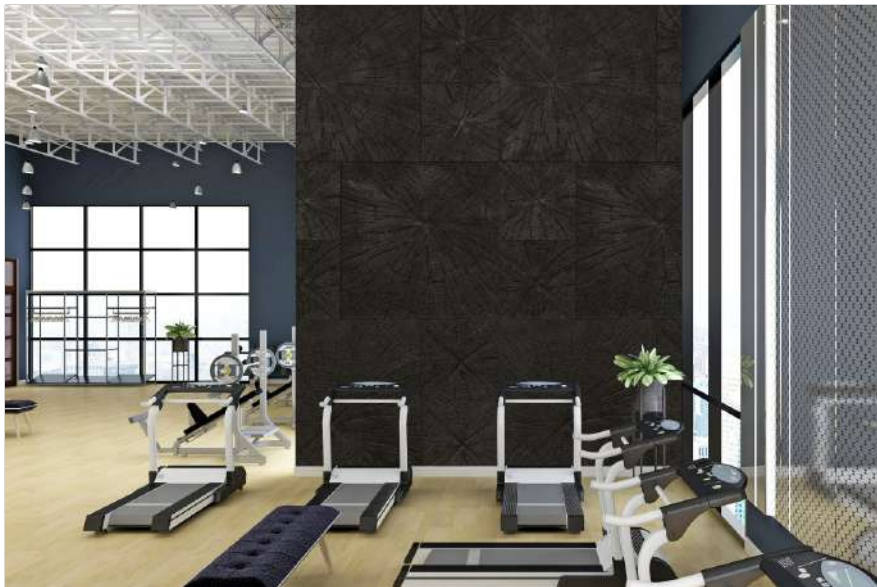
Size:  
4' x 8' (1220mm x 2440mm)  
(+/- 5mm)

Thickness:  
Approx 4mm

- Natural Feel
- Stone Cladding
- Rustic Surface



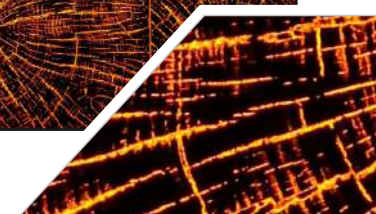
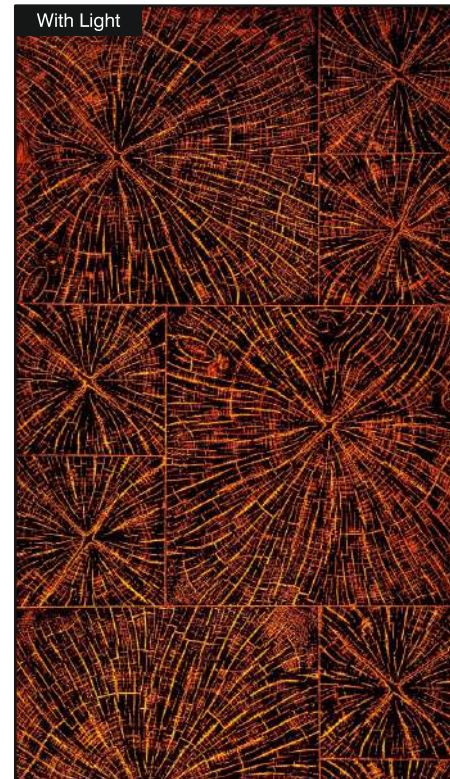
## Club House



Without Light



With Light



**PW-202**

Size:  
4' x 8' (1220mm x 2440mm)  
(+/- 5mm)

Thickness:  
Approx 4mm

- Natural Feel
- Stone Cladding
- Rustic Surface



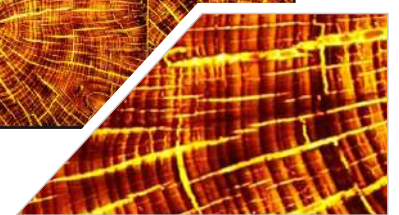
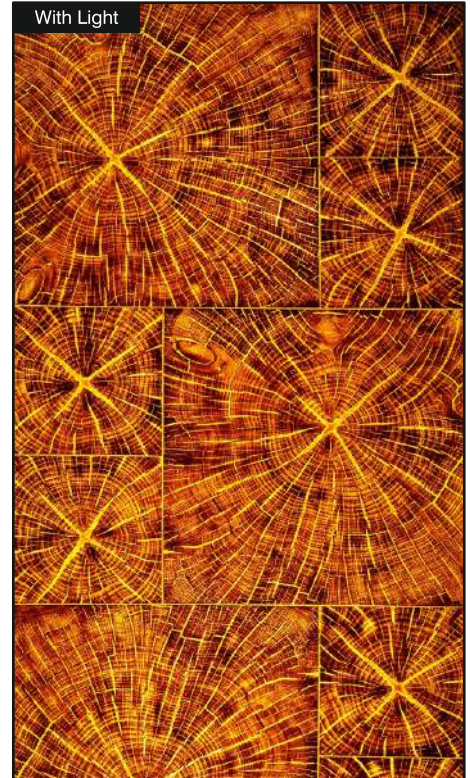
## Corridor



Without Light



With Light



**PW-203**

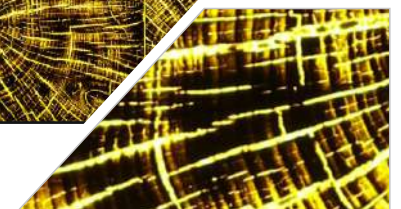
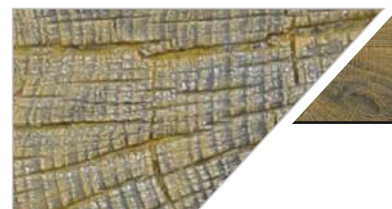
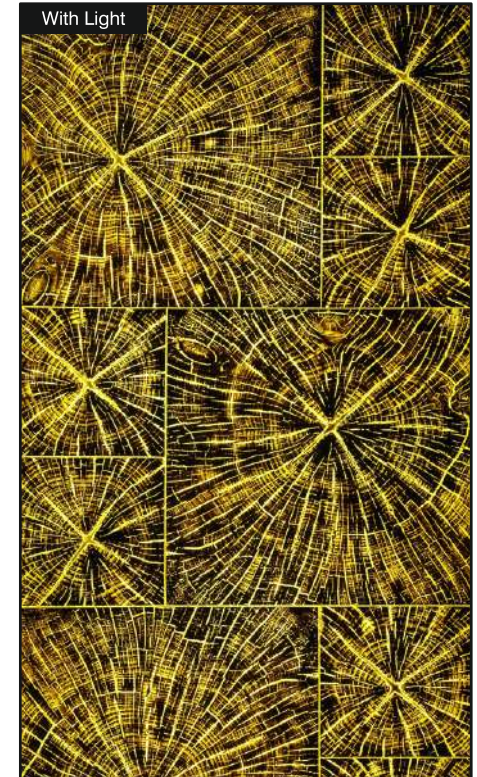
Size:  
4' x 8' (1220mm x 2440mm)  
(+/- 5mm)

Thickness:  
Approx 4mm

- Natural Feel
- Stone Cladding
- Rustic Surface



## Showroom



**PW-204**

Size:  
4' x 8' (1220mm x 2440mm)  
(+/- 5mm)

Thickness:  
Approx 4mm

- Natural Feel
- Stone Cladding
- Rustic Surface



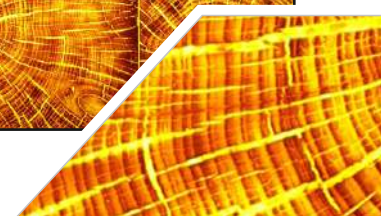
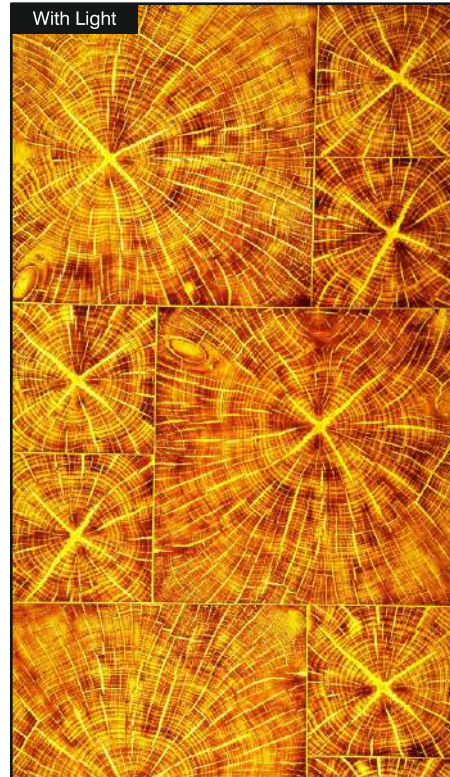
## Bathroom



Without Light



With Light



**PW-205**

Size:  
4' x 8' (1220mm x 2440mm)  
(+/- 5mm)

Thickness:  
Approx 4mm

- Natural Feel
- Stone Cladding
- Rustic Surface



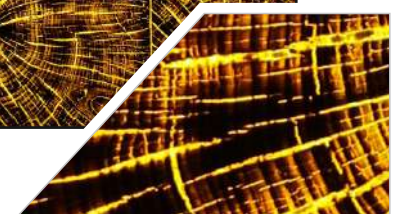
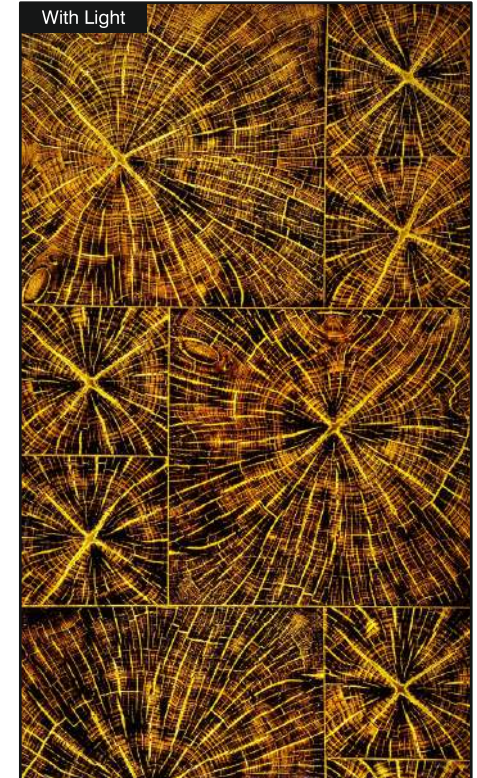
## Partition



Without Light



With Light



**PW-206**

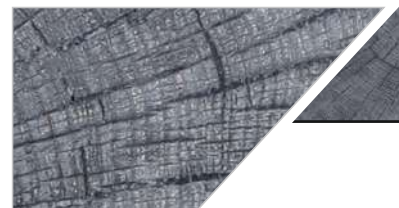
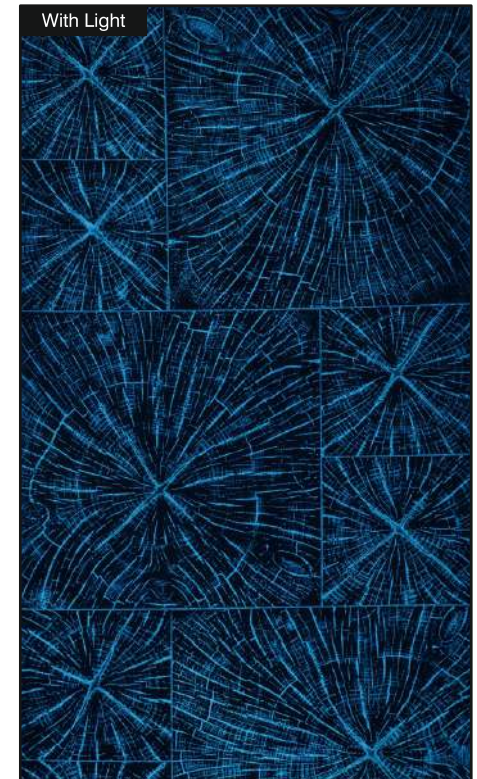
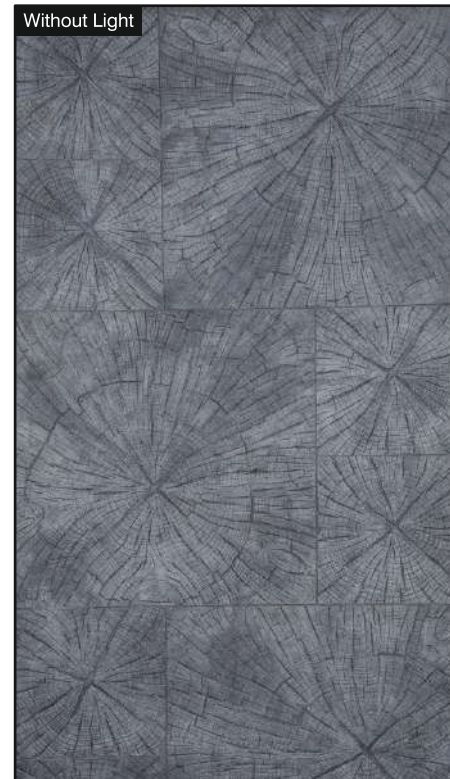
Size:  
4' x 8' (1220mm x 2440mm)  
(+/- 5mm)

Thickness:  
Approx 4mm

- Natural Feel
- Stone Cladding
- Rustic Surface



## Column



**PW-207**

Size:  
4' x 8' (1220mm x 2440mm)  
(+/- 5mm)

Thickness:  
Approx 4mm

- Natural Feel
- Stone Cladding
- Rustic Surface



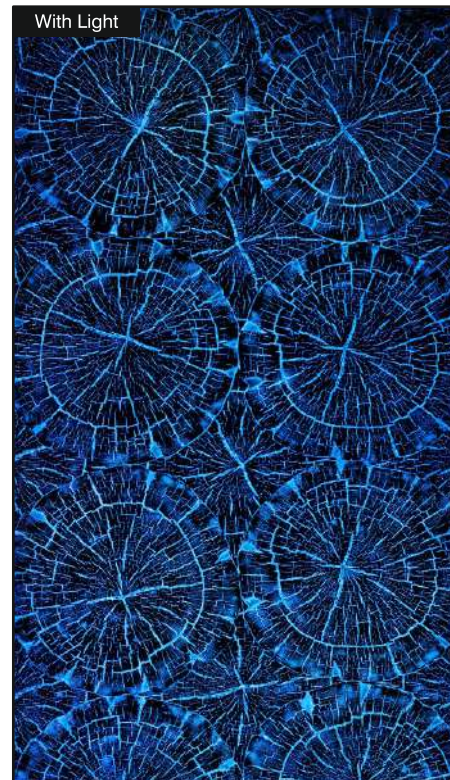
## Partition



Without Light



With Light



**PW-301**

Size:  
4' x 8' (1220mm x 2440mm)  
(+/- 5mm)

Thickness:  
Approx 4mm

- Natural Feel
- Stone Cladding
- Rustic Surface



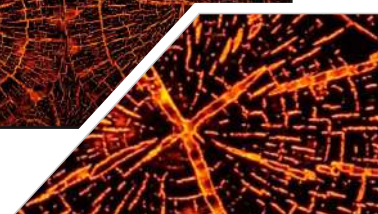
## Spa



Without Light



With Light



**PW-302**

Size:  
4' x 8' (1220mm x 2440mm)  
(+/- 5mm)

Thickness:  
Approx 4mm

- Natural Feel
- Stone Cladding
- Rustic Surface



## Lobby



Without Light



With Light



**PW-303**

Size:  
4' x 8' (1220mm x 2440mm)  
(+/- 5mm)

Thickness:  
Approx 4mm

- Natural Feel
- Stone Cladding
- Rustic Surface



## Bridge



**PW-304**

Size:  
4' x 8' (1220mm x 2440mm)  
(+/- 5mm)

Thickness:  
Approx 4mm

- Natural Feel
- Stone Cladding
- Rustic Surface



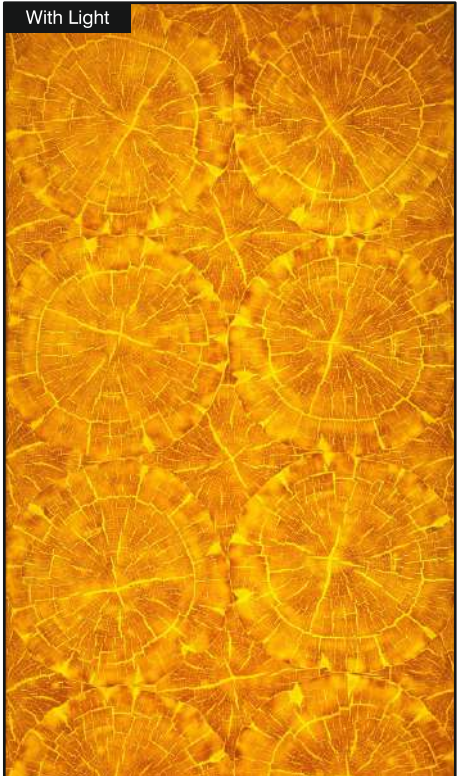
## Office



Without Light



With Light



**PW-305**



Size:  
4' x 8' (1220mm x 2440mm)  
(+/- 5mm)

Thickness:  
Approx 4mm

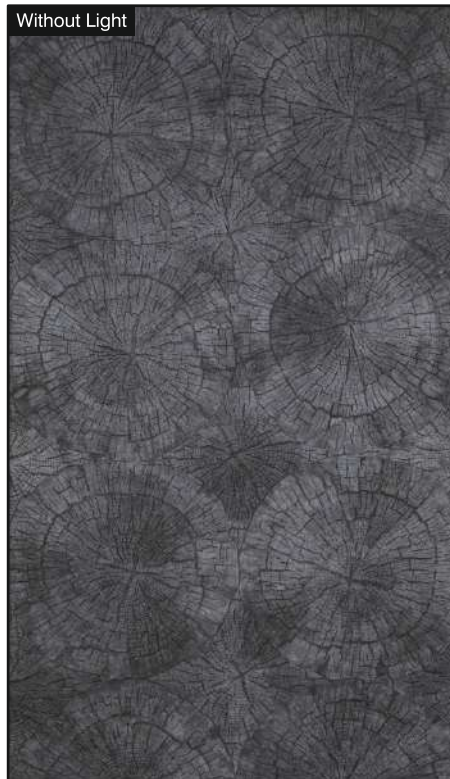
- Natural Feel
- Stone Cladding
- Rustic Surface



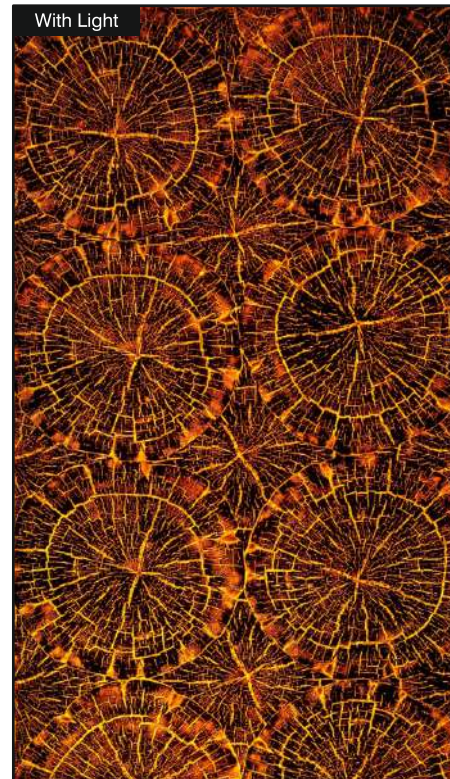
## Swimming Pool



Without Light



With Light



**PW-306**

Size:  
4' x 8' (1220mm x 2440mm)  
(+/- 5mm)

Thickness:  
Approx 4mm

- Natural Feel
- Stone Cladding
- Rustic Surface



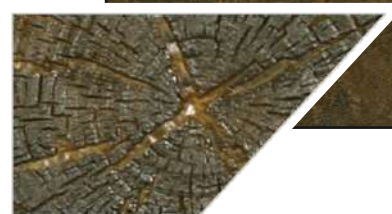
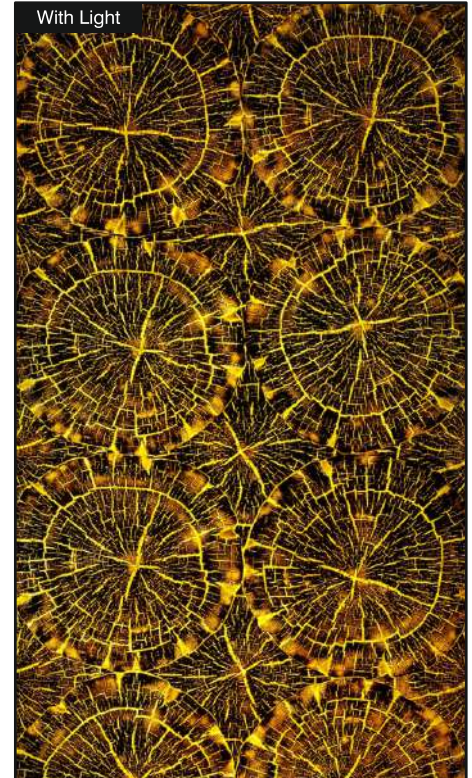
## Restaurant



Without Light



With Light



**PW-307**



Size:  
4' x 8' (1220mm x 2440mm)  
(+/- 5mm)

Thickness:  
Approx 4mm

- Natural Feel
- Stone Cladding
- Rustic Surface



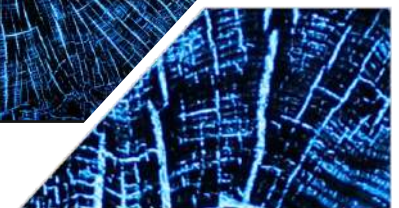
## Office



Without Light



With Light



**PW-401**

Size:  
4' x 8' (1220mm x 2440mm)  
(+/- 5mm)

Thickness:  
Approx 4mm

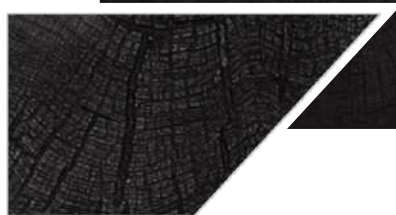
- Natural Feel
- Stone Cladding
- Rustic Surface



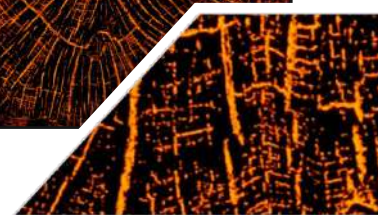
## Hotel



Without Light



With Light



**PW-402**

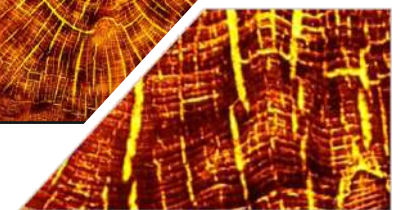
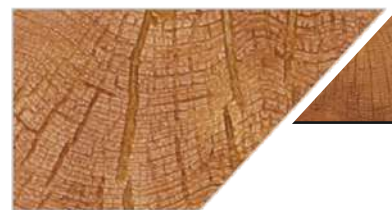
Size:  
4' x 8' (1220mm x 2440mm)  
(+/- 5mm)

Thickness:  
Approx 4mm

- Natural Feel
- Stone Cladding
- Rustic Surface



## Fire Place



**PW-403**

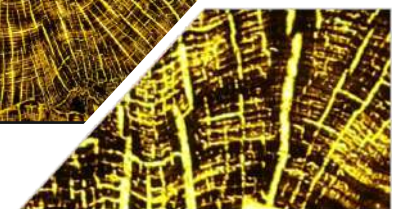
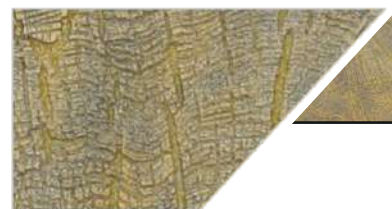
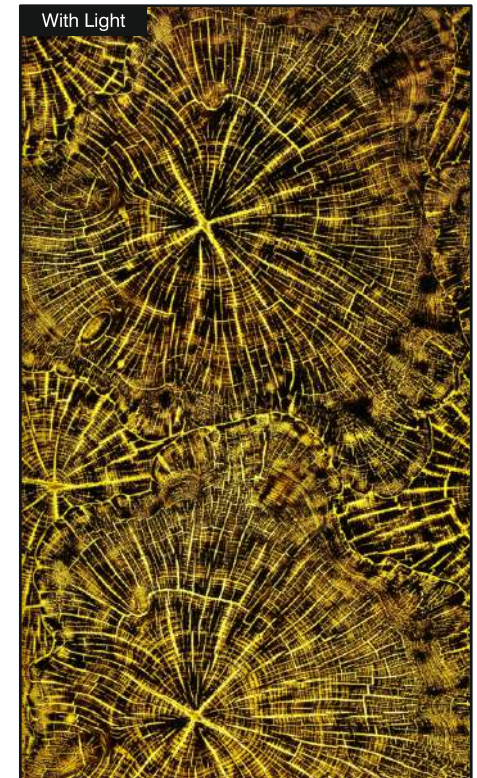
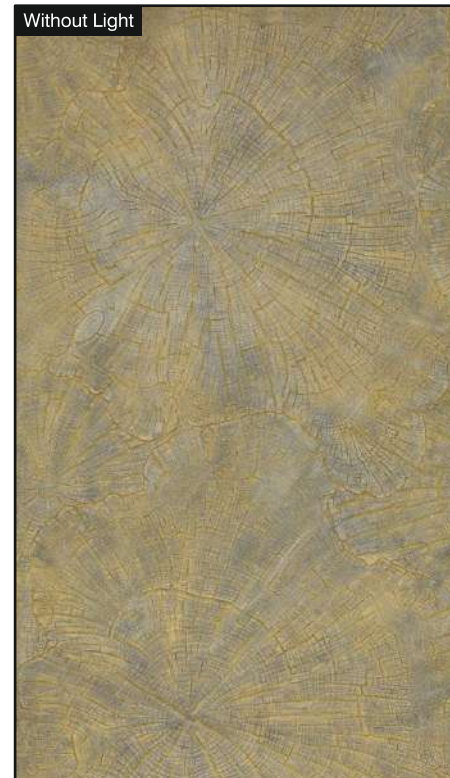
Size:  
4' x 8' (1220mm x 2440mm)  
(+/- 5mm)

Thickness:  
Approx 4mm

- Natural Feel
- Stone Cladding
- Rustic Surface



## Reception



**PW-404**

Size:  
4' x 8' (1220mm x 2440mm)  
(+/- 5mm)

Thickness:  
Approx 4mm

- Natural Feel
- Stone Cladding
- Rustic Surface



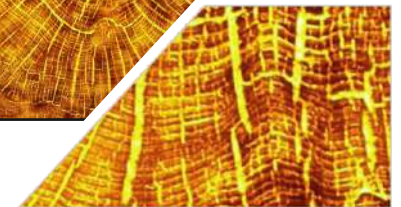
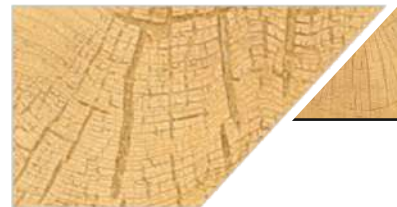
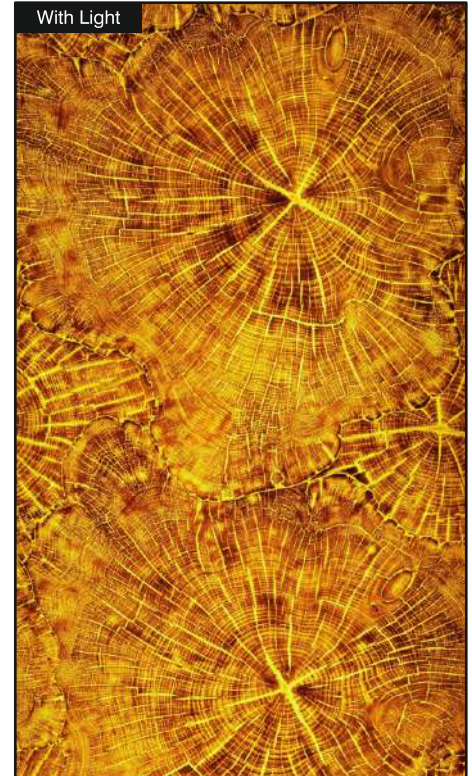
## Banquet Hall



Without Light



With Light



**PW-405**

Size:  
4' x 8' (1220mm x 2440mm)  
(+/- 5mm)

Thickness:  
Approx 4mm

- Natural Feel
- Stone Cladding
- Rustic Surface



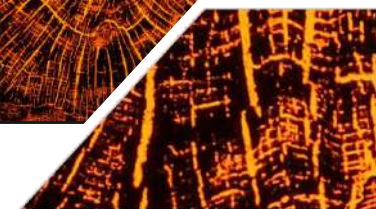
## Lounge



Without Light



With Light



**PW-406**

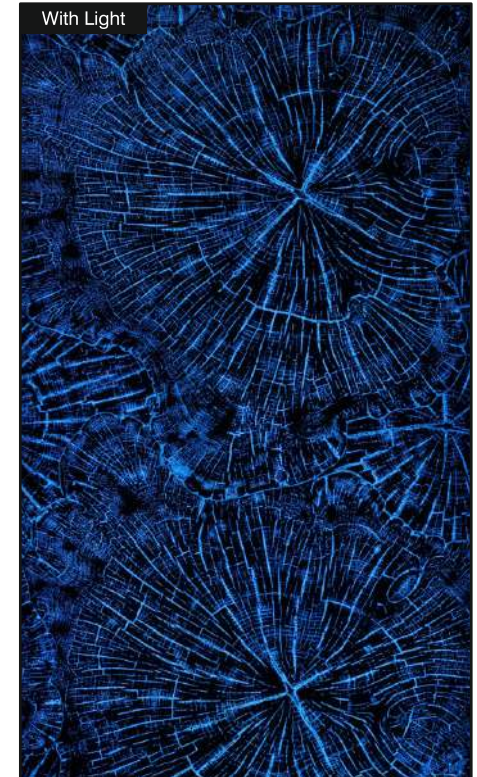
Size:  
4' x 8' (1220mm x 2440mm)  
(+/- 5mm)

Thickness:  
Approx 4mm

- Natural Feel
- Stone Cladding
- Rustic Surface



## Reception



**PW-407**

Size:  
4' x 8' (1220mm x 2440mm)  
(+/- 5mm)

Thickness:  
Approx 4mm

- Natural Feel
- Stone Cladding
- Rustic Surface



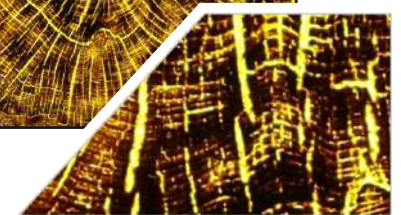
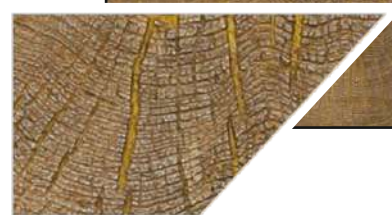
## Salon



Without Light



With Light



**PW-408**

Size:  
4' x 8' (1220mm x 2440mm)  
(+/- 5mm)

Thickness:  
Approx 4mm

- Natural Feel
- Stone Cladding
- Rustic Surface





**L-Patti**  
1.25"x1.25"  
8' Length



## *Lighting Automation*

Integrates product's aesthetics with technology can add a lot of visual interests to a space and make it feel more luxurious or sophisticated. It can add elegance and set the mood for any occasion and make it more enjoyable. It's a great way to create a more relaxing, romantic or even dramatic and inviting environment.

Integrating Lighting Automation with Back light offers following.

- LED Dimming ■ LED Tuning ■ Lighting Pattern ■ Dynamic Lighting Pattern with Music
- Customized Lighting Pattern and Scene Controller





DECONYX is made by high molecular polyester resin. It looks like a natural stone and is not as expensive as them. It is easy to operate which makes it extremely popular worldwide. The best characteristics of DECONYX is that it can transmit light and has various styles and design to choose from. It has the advantages of being bend, seamless joint process and is non breakable

#### Specifications of DECONYX

**Standard size:** 4' x 8' (Approx) AR Series: 2' x 8' (Approx)

**Thickness:** 4mm, 5mm, 7-8mm (Depending on Series & Pattern)

#### Range of application:

Decorative wall panel, bar top, table top, light-through structure, translucent walls, ceilings, bar tables, lamps, columns of commercial buildings and household decoration purpose.

#### Performance of Landscape stone products:

Possessing the natural texture of marbles, smoothness of ceramics and the elasticity of lumber, Deconyx Series could be processed without joints. Besides, they offer many designs to choose and are easy to clean and convenient to fix. Scientific tests verify that Deconyx series have neither radioactive pollution nor toxic side effects. So far, these environmental friendly stones have been widely applied into various kinds of decoration projects.

#### Process and installation of Landscape stone products:

Easy to fabricate & install. Can fabricate on the spot. Wood-cutting saw or marble-cutting saw for cutting, hand drill machine for hole-drilling, router machine for edge chamfering & bending by heat.

The Photographs just show the partial effect. Its colour, effect and veins are not absolutely the same.

Please see the samples for original colour & effect to avoid confusions. All designs are random.

**Colour Variations upto 5-10% is possible as per different batch of production.**

**Thickness:** 4mm, 5mm & 7-8mm **Recommended Cutter Blade**

**Recommended Glue for Joints:** Resibond Clear

Araldite Clear

Silicone Clear

**Recommended Glue for Pasting:** Resibond

Araldite

Bondtite

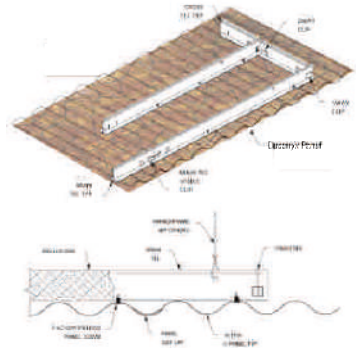


#### TEST RESULTS

Sr. No.	Test	Test Method	Unit	Results Obtained
1	Density	ASTM D 792	gm/cc	1.36
2	Water Absorption in 24 hrs.	ASTM D 570	%	0.74
3	Tensile Strength	ASTM D 638	N/mm <sup>2</sup>	45
4	Compressive Strength	ASTM D 695	N/mm <sup>2</sup>	85
5	Flexural Strength	ASTM D 790	N/mm <sup>2</sup>	92
6	Hardness	ASTM D 2583	—	40
7	Chemical Resistance 10% HCL, 10% H <sub>2</sub> SO <sub>4</sub> , 24hrs Property to be verified: Change in Appearance	ASTM D 543	—	No visible change colour, No Weight loss Observed
8	Lightfastness at exposure 100 hrs. (Xenon Arc)	ASTM G 155	—	Match with std. blue wool no. 6



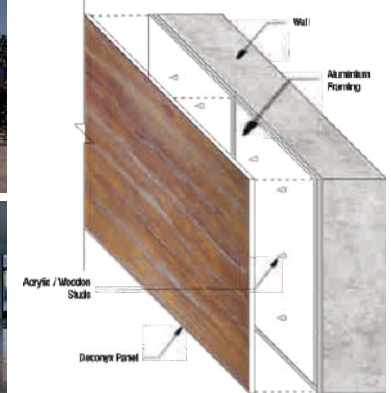
## Ceilings



Deconyx panels supported with wooden frame structure



## Wall Cladding / Column / Beam



## Furniture

Deconyx panels can be used for direct furniture installation using silicon binder with backlit applications.



## Back Light Panels

Allow backspace of 2.5 to 3 inches between the Deconyx sheet & Light panel. Amount of space behind the sheet may vary with different types of light and its application.

**Note:**  
**Slight Variations in Colours and Patterns**  
**gives natural look.**  
**We need to accept in practically.**

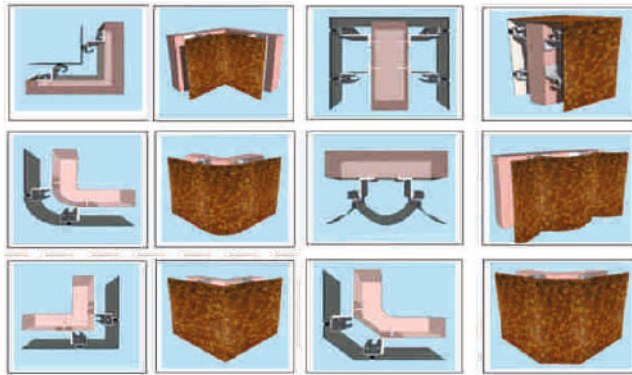
## Safety Precautions & Care :

- Cut sheets in open area to avoid itching on body.
- After Cutting, Wash the sheets with water and Brush.
- Always wear Mask & Gloves while handling & installing the panels
- Keep sheets covered during any chemical application at site.
- For any kind of spot, clean with white cloth and ACETONE (Spirit).



## Exterior Cladding

Exterior wall panels cladding with aluminium framing and backlit installation

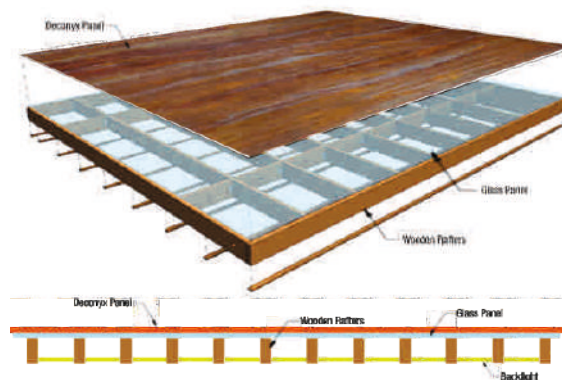


## Flooring

Deconyx panels installation with silicon binding



Deconyx panels installation with wooden rafters and glass panel



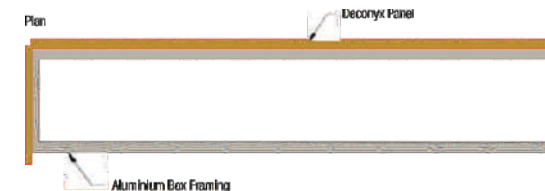
## Sheet Bending Process

- Apply heat on both sides for easy bending
- Chamfering is a better and easy option for 90° attachment



Apply transparent silicone to  
Join both pieces.

## Signage Board



- CNC engraved Deconyx panel with aluminium framing
- Backlit installation

- Installation similar to ACP panels
- Half-cut groove can be used to fold the panel with heating process

**NOTE:**  
BEFORE IMPLYING ANY METHOD OVER SHEET MAKE SURE TO TRY IT OVER A PIECE OF THE SHEET



# Installations

- Exterior
- Interior
- CNC Work / Signage



**JAMNAGAR (AR-1201)**



# Installations

- Exterior
- Interior
- CNC Work / Signage







Corporate Office : 201, Marvella Business Hub, Opp. RTO, PAL, Surat-395010  
Branch Office : 215, Stellar, Sindhu Bhavan Road, Bodakdev, Ahmedabad-380054  
Phone : +91 261 2458994 / 995 / 240 2005  
Mobile : +91 76210 00283 / 99740 88414 / 99740 42885  
E-mail : [sales@deconyx.in](mailto:sales@deconyx.in)  
Website : [www.deconyx.in](http://www.deconyx.in)

 +91 76210 00283 / 383  [officialdeconyx](https://www.instagram.com/officialdeconyx)  [deconyx](https://www.facebook.com/deconyx)  [deconyx](https://www.youtube.com/deconyx)



