



# Global Water Solution

WORLD CLASS  
WATER SOFTENERS

NO MORE HARD  
WATER ISSUES



## KEY BENEFITS

- ▶ Healthy Hair
- ▶ Bright Cloths
- ▶ Soft on Babies
- ▶ Foamy Bath
- ▶ Glowing Skin
- ▶ Shiny Cutlet
- ▶ Lustrous Fitting
- ▶ Spotless Sink
- ▶ Glossy Carwash
- ▶ Scalefree Pipe

## OUR BRANDS



## - APPLICATIONS -

| Residences | Commercial Properties | Individual Houses | Apartments |  
| Villas Rock Homes | Bungalow | Hospitals | Hotels | Restaurant |



## MANUAL & AUTOMATIC DOMESTIC WATER SOFTNER

### BENEFITS OF DOMESTIC WATER SOFTNER

Spotless, cleaner & Shinier crockeries & utensils.Reduces consumption of detergent, soap, shampoo, etc., Preserve the life of appliances such as washing machine, water heater, laundry equipment, etc., Prevents tap flush, shower head, plumbing line from clogging due to deposition of calcium Soft & Clean skin

| MODEL   | 1000 LPH                                     | 2000 LPH                                     | 3000 LPH                                     | 6000 LPH                                     | 9000 LPH                                     |
|---|--|--|--|--|--|
| Vessel Diameter in Inch                             | 8  | 12   | 13   | 16   | 21   |
| Veseel Height in Inch                               | 44   | 48   | 54   | 65   | 62   |
| Ion - Exchange Resin quantity in Liter              | 25   | 50   | 100  | 175  | 300  |
| NaCl quantity in KG Each Regeneration               | 4  | 8  | 12   | 22   | 30   |
| Output (X1000) Ltrs on 200 ppm Hardness             | 24   | 24   | 30   | 50   | 80   |
| Regeneration Period in days on 500 Ltrs per day use | 48   | 48   | 60   | 100  | 165  |
| Maximum Flow Rate (X1000 Ltrs / Hour)               | 2  | 2  | 3  | 6  | 9  |
| Brine Tank Capacity (Litres)                        | 80   | 80   | 80   | 120  | 120  |
| Multiport Valve                                     | Designer Valve with Vessel<br>Colour Maching | Designer Valve with Vessel<br>Colour Maching | Designer Valve with Vessel<br>Colour Maching | Designer Valve with Vessel<br>Colour Maching | Designer Valve with Vessel<br>Colour Maching |
| Multiport Valve Size & Mounting                     | 25 NB/Top                                    | 25 NB/Top                                    | 25 NB/Top                                    | 25 NB/Top                                    | 25 NB/Top                                    |
| Maximum Operating Pressure                          | 2 Bar  | 2 Bar  | 2 Bar  | 2 Bar  | 2 Bar  |

## MANUAL & AUTOMATIC DOMESTIC SAND FILTER

### BENEFITS OF SAND FILTER

Removes suspended particles from water Prevent clogging of shower head water tap, plumbing line, etc.,

### EXTRA FEATURES

Installation with Vaccum Reducer to protect the vessel from damage.

| MODEL                                 | 1000 LPH                                     | 2000 LPH                                     | 3000 LPH                                     | 6000 LPH                                     | 9000 LPH                                     |
|---------------------------------------|--|--|--|--|--|
| Vessel Diameter in Inch               | 8  | 12   | 13   | 16   | 21   |
| Veseel Height in Inch                 | 44   | 48   | 54   | 65   | 62   |
| Phebul                                | 25   | 25   | 25   | 50   | 75   |
| Coarse Sand Media in KG               | 5  | 25   | 25   | 50   | 75   |
| Fine Sand Media in KG                 | 5  | 25   | 50   | 75   | 150  |
| Total Filter Media in KG              | 30   | 75   | 100  | 175  | 300  |
| Maximum Flow Rate (X1000 Ltrs / Hour) | 2  | 2  | 3  | 6  | 9  |
| Activation Medium                     | 80   | Only Backwash                                | Only Backwash                                | Only Backwash                                | Only Backwash                                |
| Multiport Valve                       | Designer Valve with Vessel<br>Colour Maching | Designer Valve with Vessel<br>Colour Maching | Designer Valve with Vessel<br>Colour Maching | Designer Valve with Vessel<br>Colour Maching | Designer Valve with Vessel<br>Colour Maching |
| Multiport Valve Size & Mounting       | 25 NB/Top                                    | 25 NB/Top                                    | 25 NB/Top                                    | 25 NB/Top                                    | 25 NB/Top                                    |
| Maximum Operating Pressure            | 2 Bar  | 2 Bar  | 2 Bar  | 2 Bar  | 2 Bar  |



## MANUAL & AUTOMATIC DOMESTIC IRON FILTER

### BENEFITS OF DOMESTIC IRON FILTER

Preserve pipeline, shower head tap, faucets from clogging due to deposition of Iron Prevent from colour change of clothes specially white clothes

### EXTRA FEATURES

Installation with Vacuum Reducer to protect the vessel from damage.

| MODEL                                 | 1000 LPH                                      | 2000 LPH                                      | 3000 LPH                                      | 6000 LPH                                      |
|---------------------------------------|---|---|---|---|
| Vessel Diameter in Inch               | 8   | 13  | 16  | 21  |
| Vessel Height in Inch                 | 44  | 54  | 65  | 62  |
| Filter Media (kg) (Birm Media)        | 25  | 56  | 85  | 170   |
| Sillex (kg)                           | 10  | 25  | 50  | 50  |
| Activation Medium                     | Back wash                                     | Back wash                                     | Back wash                                     | Back wash                                     |
| Maximum Flow Rate (X1000 Ltrs / Hour) | 1.5   | 1.5   | 3   | 6   |
| Multiport Valve                       | Designer Valve with Vessel<br>Colour Matching | Designer Valve with Vessel<br>Colour Matching | Designer Valve with Vessel<br>Colour Matching | Designer Valve with Vessel<br>Colour Matching |
| Multiport Valve Size & Mounting       | 25 NB/Top                                     | 25 NB/Top                                     | 25 NB/Top                                     | 25 NB/Top                                     |
| Maximum Operating Pressure            | 2 Bar   | 2 Bar   | 2 Bar   | 2 Bar   |

## MANUAL & AUTOMATIC DOMESTIC CARBON FILTER

### BENEFITS OF COMMERCIAL CARBON FILTER

**Goodbye Contaminants** - Removes Organic Chemicals, asbestos, cysts, lead, certain pesticides

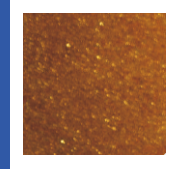
hello Minerals-adds minerals like calcium magnesium and iron | **Tasty** - absorb the unpleasant odors,

**Low Cost** - Naturally occurring material, available

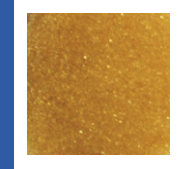
| MODEL                                 | 1000 LPH     | 2000 LPH     | 3000 LPH     | 6000 LPH     |
|---------------------------------------|--------------|--------------|--------------|--------------|
| Vessel Diameter in Inch               | 8            | 12           | 13           | 16           |
| Vessel Height in Inch                 | 44           | 48           | 54           | 65           |
| Carbon Media in KG                    | 25           | 25           | 50           | 75           |
| Sillex Media in KG                    | 10           | 25           | 25           | 50           |
| Maximum Flow Rate (X 1000 Ltrs/Hours) | 2            | 2            | 3            | 6            |
| Activation Medium                     | Back wash    | Back wash    | Back wash    | Back wash    |
| Multiport Valve                       | 25NB Top     | 25NB Top     | 25NB Top     | 40NB Top     |
| Material of construction              | FRN          | FRN          | FRN          | FRN          |
| Max. Working Pressure                 | 3.5 Kg/Sq.cm | 3.5 Kg/Sq.cm | 3.5 Kg/Sq.cm | 3.5 Kg/Sq.cm |
| Min Working Pressure                  | 2.0 Kg/Sq.cm | 2.0 Kg/Sq.cm | 2.0 Kg/Sq.cm | 2.0 Kg/Sq.cm |

# COMMERCIAL WATER SOFTENERS

## WATER SOFTENER MEDIA / ION EXCHANGE PROCESS RESIN



**C-25 NA Resin**  
( Upto 1500 ppm Hardness Level)



**220 NA Resin**  
( Upto 800 ppm Hardness Level)

### SOFTENER SPECIFICATION

| Content                                   | CWS 9000 | CWS 14000 | CWS 20000 | CWS 30000 | CWS 40000       | CWS 60000       |
|---|----------|-----------|-----------|-----------|-----------------|-----------------|
| Vessel Diameter in inch                   | 21       | 24        | 30        | 36        | 42              | 48              |
| Vessel Height in inch                     | 62       | 72        | 72        | 72        | 72              | 72              |
| Ion exchange resin quantity in liter      | 275      | 450       | 600       | 800       | 1200            | 1500            |
| NaCl Quantity in Kg for each Regeneration | 32       | 50        | 60        | 80        | 120             | 150             |
| Output (X1000)Ltrs on 200 PPM Hardness    | 80       | 123       | 165       | 220       | 412             | 550             |
| Max Flow Rate (X 1000 Ltr,Hour)           | 9        | 14        | 20        | 30        | 40              | 60              |
| Multiport Valve                           | 40NB(SM) | 40NB(SM)  | 50NB(SM)  | 65NB(SM)  | Frontal Pipe 3" | Frontal Pipe 4" |
| Maximum Operating Pressure                | 3.5 Bar  | 3.5 Bar   | 3.5 Bar   | 3.5 Bar   | 3.5 Bar         | 3.5 Bar         |

### SAND FILTER SPECIFICATION

| Content                       | CSF 9000  | CSF 14000 | CSF 20000 | CSF 30000 | CSF 40000       | CSF 60000       |
|-------------------------------|-----------|-----------|-----------|-----------|-----------------|-----------------|
| Vessel Diameter in inch       | 21        | 24        | 30        | 36        | 42              | 48              |
| Vessel Height in inch         | 62        | 72        | 72        | 72        | 72              | 72              |
| Silex Media in Kg             | 75        | 125       | 150       | 250       | 250             | 300             |
| Coarse Sand Media in Kg       | 75        | 125       | 200       | 250       | 400             | 600             |
| Fine Sand Media in Kg         | 150       | 300       | 600       | 700       | 800             | 1000            |
| Total Filter Media in Kg      | 300       | 550       | 950       | 1150      | 1450            | 1900            |
| Max Flow Rate (1x1000 Ltr/Hr) | 9         | 14        | 20        | 30        | 40              | 60              |
| Activation Medium             | Back Wash | Back Wash | Back Wash | Back Wash | Back Wash       | Back Wash       |
| Multiport Valve               | 40MB (SM) | 40MB (SM) | 50MB (SM) | 65MB (SM) | Frontal Pipe 3" | Frontal Pipe 4" |
| Max. Operating Pressure       | 3.5 Bar   | 3.5 Bar   | 3.5 Bar   | 3.5 Bar   | 3.5 Bar         | 3.5 Bar         |

### CARBON FILTER SPECIFICATION

| Content                  | CIF 9000  | CIF 14000 | CIF 20000 | CIF 30000 | CIF 40000 | CIF 60000 |
|--------------------------|-----------|-----------|-----------|-----------|-----------|-----------|
| Vessel Diameter in inch  | 21        | 24        | 30        | 36        | 42        | 48        |
| Vessel Height in inch    | 62        | 72        | 72        | 72        | 72        | 72        |
| Carbon Media Value in Kg | 250       | 400       | 550       | 700       | 1000      | 1300      |
| Multiport Valve          | 40 NB     | 40 NB     | 40 NB     | 40 NB     | 50 NB     | 60 NB     |
| Max. Operating Pressure  | 3.5 Bar   | 3.5 Bar   | 3.5 Bar   | 3.5 Bar   | 3.5 Bar   | 3.5 Bar   |
| Activation Carbon Medium | Back Wash | Back Wash | Back Wash | Back Wash | Back Wash | Back Wash |

CALL US FOR

**Free Water Test**  
**99457 55410**

KNOW MORE ON

**Free Demo**  
**9739999474**



Feel free to contact :

**Global Water Solution**

#03, 1st Floor, Vema Reddy Building

Marathahalli Outer Ring Road, Kadabisanahalli

Bangalore 560 103 | Tel: 080 4374 8892

E-Mail: [info@gwsro.com](mailto:info@gwsro.com) | [www.gwsro.com](http://www.gwsro.com)