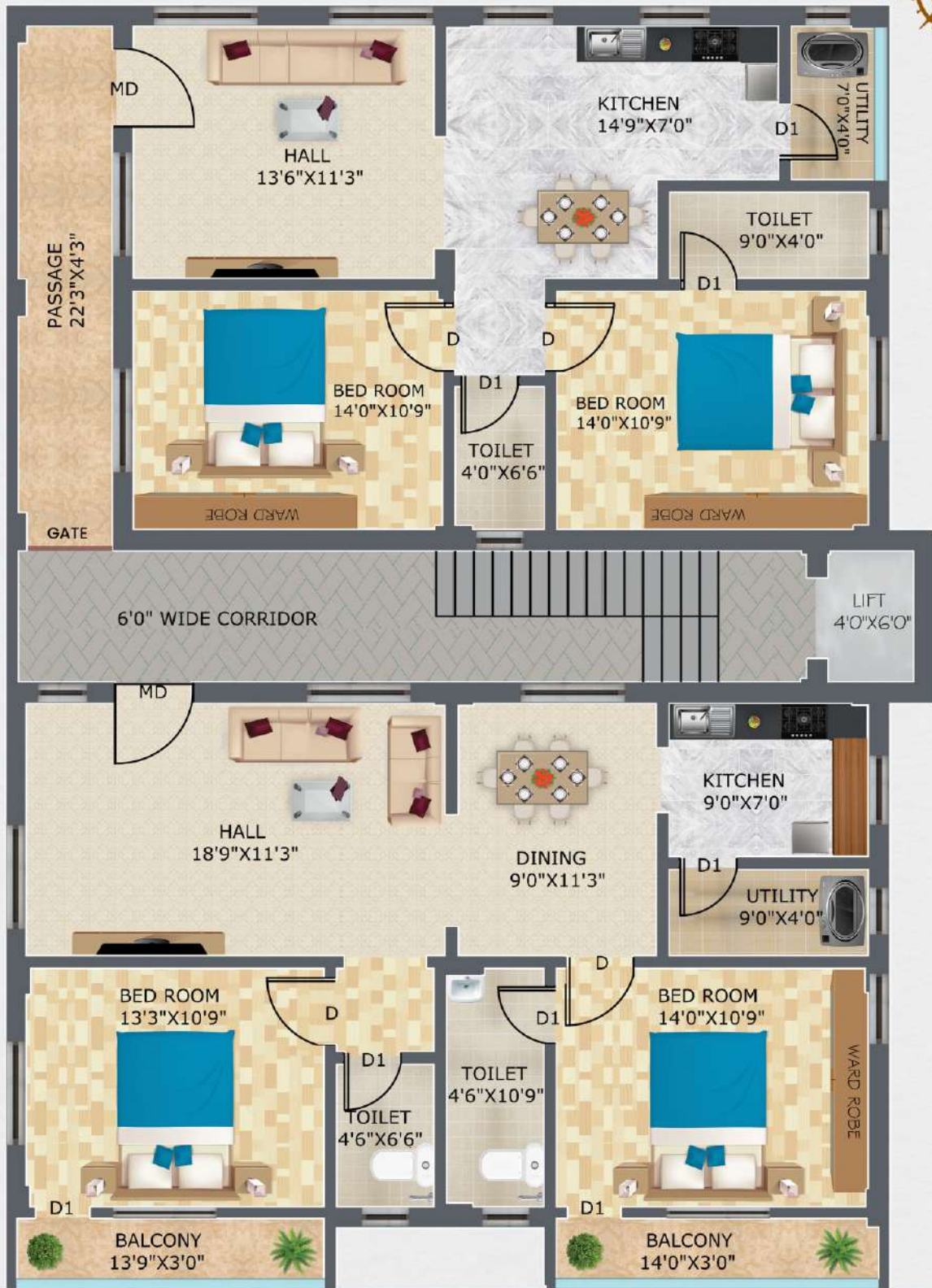


KB Nivas

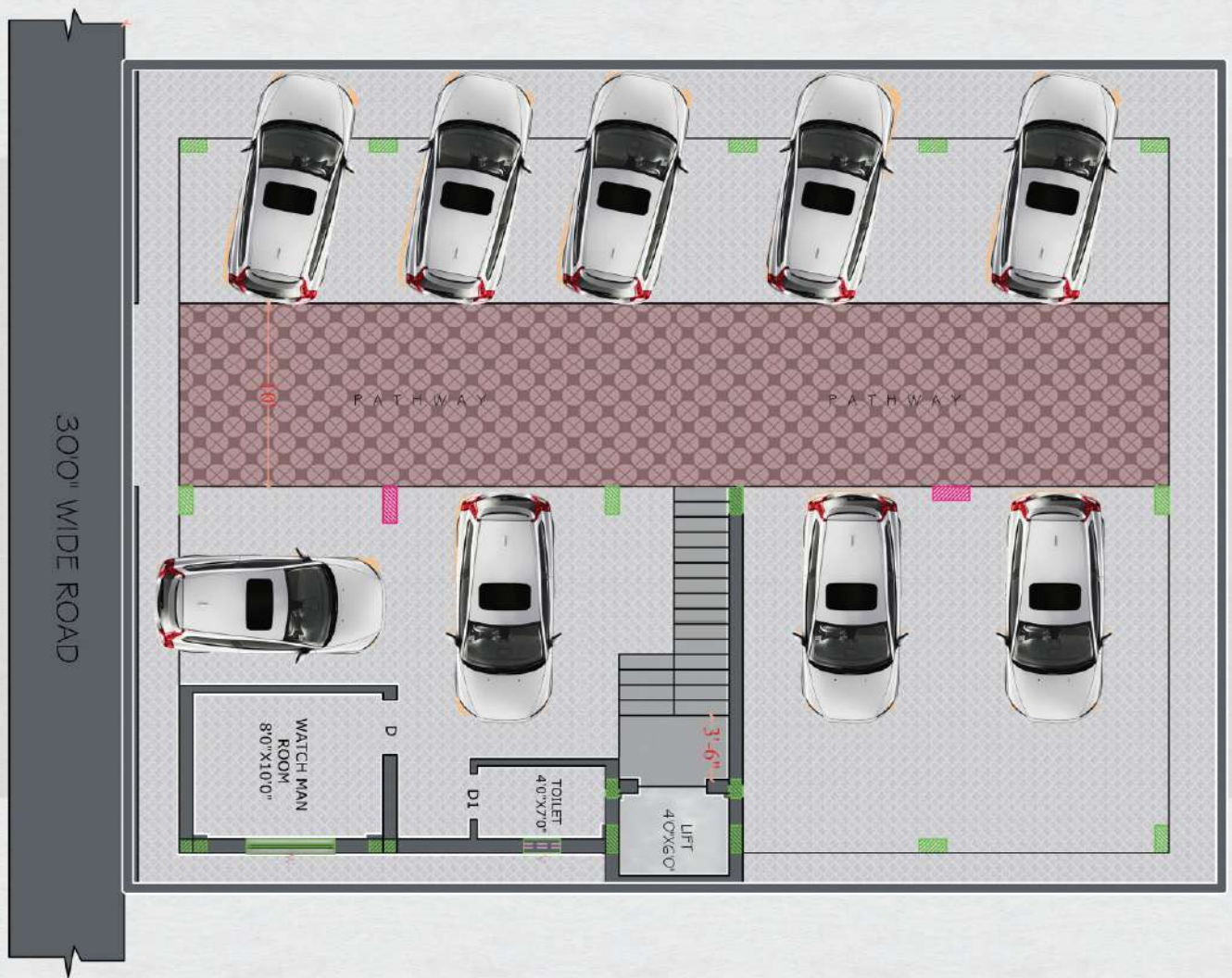


TYPICAL FLOOR PLAN



30'0" WIDE ROAD

Area Statement **Flat 1 & 2**
1150 Sq. Ft.



Project Highlights

- 100% Vastu
- Beautiful elevation in prime location
- Ideal project size with only 10 flats
- Quality construction
- 24 Hours water supply
- Lift Available
- Bank Loan Facility Available
- Affordable Cost
- Easy access to major centers
- Car parking for all the flats
- Power back-up generator
- Intercom facility to all the units connecting security



ROUTE MAP

(NOT TO SCALE)



KEY POINTS

- Tiruchanoor Padmavati Temple
- Padmashali Bhavan
- 25 Meters to National Highway

☐ **STRUCTURE**
RCC Framed structure designed as seismic resistant and resistant to wind pressures.

☐ **SUPER STRUCTURE**
9" thick Red clay bricks for outside walls and 4.5" thick for internal walls.

☐ **PLASTERING**
Two coats of plastering with sponge finish in cement mortar.

☐ **DOORS**
Main door: Teak wood polished frame and shutter with standard fittings of designer brass hardware and magic eye. Internal doors: Best imported teak wood frames with commercial flush door shutters and powder coated standard hardware.

☐ **WINDOWS**
UPVC three track windows with MS safety grills.

☐ **PAINTING**
Internal walls will be finished with two or more coats of putty, one coat of internal acrylic primer and two coats of interior emulsion paint. Outer wall will be finished with one coat exterior acrylic primer and two coats of exterior emulsion paint.

☐ **PAINTING**
Internal walls will be finished with two or more coats of putty, one coat of internal acrylic primer and two coats of interior emulsion paint. Outer wall will be finished with one coat exterior acrylic primer and two coats of exterior emulsion paint.

☐ **TOILETS**
Anti skid ceramic tiles flooring and designer glazed ceramic dado up to 6' height. EWC of standard make and Jaquar sanitary fittings of basic model will be provided for all bath rooms.

☐ **KITCHEN**
Platform with black polished granite, SS Sink, glazed ceramic tiles dado up to 2' height above the platform.

☐ **ELECTRICAL**
Concealed copper wiring and 3 phase electrical supply with good quality switches & boards. One 5 amps socket in all bedrooms.

☐ **LIFT**
Passenger lift of standard make.

☐ **GENERATOR**
Generator for common points, corridors, lift and bore well.

☐ **NOTE**
Registration GST and any Government taxes are to borne by purchaser.



K.B. Nivas, Vigneshwar Nagar,
Tiruchanoor – 517503

Ashok Raju : 9989712412