



**MCB - SWITCHGEAR**

**THE  
FUTURE  
SIMPLIFYING  
ELECTRICITY**



**MCB - SWITCHGEAR**



**AN SN GROUP COMPANY**  
LP02-APRIL 2022

# Safety starts with us.

	Capacity/ Approx. Wattage	Current Rating of MCB	Type of MCB	Appliances
Air-Conditioner	1.0 T 1.5 T 2.0 T	16A 20A 32A	C Series C Series C Series	
Refrigerator	165 L 350 L	3A 4A	C Series C Series	
Oven + Giller	4500 W 1750 W	25A 10A	B Series B Series	
Oven	750 W	6A	B Series	
Toaster	1200 W	10A	B Series	
Electric Kettle	1500 W	10A	B Series	
Electric Iron	750 W	6A	B Series	
Electric Geyser	4000 W	20A	B Series	
Mixer	200 W	2A	C Series	
Washing Machine	1300 W	10A+	C Series	

1 MCB  
2 ISOLATORS

3 CHANGE OVER  
4 RCCB

5  
6 DBS

7  
8  
9 SWITCH  
10 GEARS

10 FUSE UNITS  
11 REWIREABLE  
MAIN SWITCHES

12 ACRYLIC DOOR  
DB BOXES

**marvello**  
mcb Range

**Miniature Circuit Breaker (MCB)  
Single Pole**



**Miniature Circuit Breaker (MCB)  
Double Pole**



**Miniature Circuit Breaker (MCB)  
Three Pole**



In accordance with IS/IEC 60898-1, 240/415, AC 5Hz 'C' Curve



**HSN Code 8536**

CODE	RATING (A)	TYPE	STD.PACK	UNIT PRICE
SN-501	6A	SP	144	171.00
SN-502	10A	SP	144	171.00
SN-503	16A	SP	144	171.00
SN-504	20A	SP	144	171.00
SN-505	25A	SP	144	171.00
SN-506	32A	SP	144	171.00
SN-507	40A	SP	144	260.00
SN-508	63A	SP	144	310.00

'C' Curve

**HSN Code 8536**

CODE	RATING (A)	TYPE	STD.PACK	UNIT PRICE
SN-509	6A	DP	72	515.00
SN-510	10A	DP	72	515.00
SN-511	16A	DP	72	515.00
SN-512	20A	DP	72	515.00
SN-513	25A	DP	72	515.00
SN-514	32A	DP	72	515.00
SN-515	40A	DP	72	660.00
SN-516	63A	DP	72	790.00

'C' Curve

**HSN Code 8536**

CODE	RATING (A)	TYPE	STD.PACK	UNIT PRICE
SN-517	6A	TP	48	690.00
SN-518	10A	TP	48	690.00
SN-519	16A	TP	48	690.00
SN-520	20A	TP	48	690.00
SN-521	25A	TP	48	690.00
SN-522	32A	TP	48	690.00
SN-523	40A	TP	48	870.00
SN-524	63A	TP	48	1020.00
SN-525	100A	TP	48	3050.00
SN-526	125A	TP	48	3400.00

**Miniature Circuit Breaker (MCB)  
Four Pole**

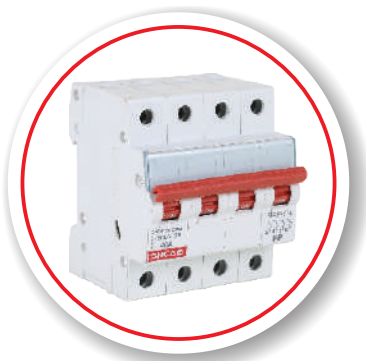


*marvello*  
Isolators Range

**ISOLATORS Double Pole**



**ISOLATORS Four Pole**



In accordance with IS/IEC 60898-1, 240/415, AC 5Hz 'C' Curve

**HSN Code 8536**

CODE	RATING (A)	TYPE	STD.PACK	UNIT PRICE
SN-527	6A	FP	36	1155.00
SN-528	10A	FP	36	1155.00
SN-529	16A	FP	36	1155.00
SN-530	20A	FP	36	1155.00
SN-531	25A	FP	36	1155.00
SN-532	32A	FP	36	1155.00
SN-533	40A	FP	36	1365.00
SN-534	63A	FP	36	1525.00
SN-535	100A	FP	36	3990.00
SN-536	125A	FP	36	4410.00

**HSN Code 8536**

CODE	RATING (A)	TYPE	STD.PACK	UNIT PRICE
SN-537	40A	DP	72	370.00
SN-538	63A	DP	72	410.00
SN-539	100A	DP	72	760.00
SN-540	125A	DP	72	970.00

**HSN Code 8536**

CODE	RATING (A)	TYPE	STD.PACK	UNIT PRICE
SN-541	40A	FP	36	745.00
SN-542	63A	FP	36	780.00
SN-543	100A	FP	36	1210.00
SN-544	125A	FP	36	1365.00

**marvello**  
Change Over Range

Two Way Center Off MCB  
Change Over Switch Two Pole



In accordance with IS/IEC 60947-3, AC 5Hz

HSN Code 8536

CODE	RATING (A)	TYPE	STD.PACK	UNIT PRICE
SN-545	25A	DP	72	525.00
SN-546	40A	DP	72	840.00
SN-547	63A	DP	72	1050.00

Two Way Center Off MCB  
Change Over Switch Four Pole



HSN Code 8536

CODE	RATING (A)	TYPE	STD.PACK	UNIT PRICE
SN-548	25A	FP	36	1050.00
SN-549	40A	FP	36	1260.00
SN-550	63A	FP	36	1680.00

**marvello**  
Recb Range

Residual Current Circuit  
Breaker (RCCB) Double Pole



In accordance with IS/IEC 60898-1, 240/415, AC 5Hz



HSN Code 8536

CODE	RATING (A)	TYPE	STD.PACK	UNIT PRICE
SN-551	25A / 30 MA	DP	150	1693.00
SN-552	25A / 1000 MA	DP	150	1693.00
SN-553	25A / 300 MA	DP	150	1693.00
SN-554	40A / 30 MA	DP	150	1750.00
SN-555	40A / 100 MA	DP	150	1750.00
SN-556	40A / 300 MA	DP	150	1750.00
SN-557	63A / 30 MA	DP	150	1840.00
SN-558	63A / 100 MA	DP	150	1840.00
SN-559	63A / 300 MA	DP	150	1840.00

In accordance with IS/IEC 60898-1, 240/415, AC 5Hz 'C' Curve

**Residual Current Circuit  
Breaker (RCCB) Four Pole**



CODE	RATING (A)	TYPE	STD.PACK	UNIT PRICE
SN-560	25A / 30 MA	FP	75	2220.00
SN-561	25A / 100 MA	FP	75	2220.00
SN-562	25A / 300 MA	FP	75	2220.00
SN-563	40A / 30 MA	FP	75	2415.00
SN-564	40A / 100 MA	FP	75	2415.00
SN-565	40A / 300 MA	FP	75	2415.00
SN-566	63A / 30 MA	FP	75	2512.00
SN-567	63A / 100 MA	FP	75	2512.00
SN-568	63A / 300 MA	FP	75	2512.00
SN-569	100A / 300 MA	FP	75	4434.00

# MCB DISTRIBUTION BOX

**Work Together,  
Work Safely.**



**Single Phase Single Door DB's**

**HSN Code 8537**

CODE	No. of Ways	STD.PACK	UNIT PRICE
SN-570	1 POLE	40	240.00
SN-571	2 POLE	40	240.00
SN-572	3 POLE	40	360.00
SN-573	4 POLE	40	400.00

**Single Phase Single Door DB's**

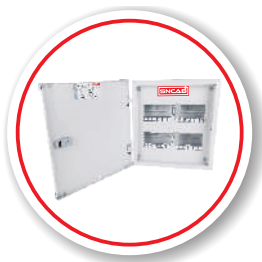
**HSN Code 8537**

CODE	No. of Ways	STD.PACK	UNIT PRICE
SN-574	6 WAY	24	550.00
SN-575	8 WAY	24	660.00
SN-576	10 WAY	20	760.00
SN-577	12 WAY	20	810.00
SN-578	16 WAY	10	1050.00

**Single Phase Double Door DB's**

**HSN Code 8537**

CODE	No. of Ways	STD.PACK	UNIT PRICE
SN-579	4 WAY	8	1230.00
SN-580	6 WAY	8	1365.00
SN-581	8 WAY	6	1476.00
SN-582	10 WAY	6	1750.00
SN-583	12 WAY	6	1805.00
SN-584	16 WAY	6	2236.00

**Three Phase Double Door DB's**

**HSN Code 8537**

CODE	No. of Ways	STD.PACK	UNIT PRICE
SN-585	4 WAY	5	2150.00
SN-586	6 WAY	5	2415.00
SN-587	8 WAY	3	3360.00
SN-588	12 WAY	3	4830.00

**Phase Selector DB's Double Door Senior**

**HSN Code 8537**

CODE	No. of Ways	STD.PACK	UNIT PRICE
SN-589	63/4/ TPN D.D WITHOUT ROTARY (12+6)	3	4275.00
SN-590	63/6/ TPN D.D WITHOUT ROTARY (18+6)	3	4400.00
SN-591	63/8/ TPN D.D WITHOUT ROTARY (24+8)	2	6000.00
SN-592	63/12/ TPN D.D WITHOUT ROTARY (36+12)	2	7510.00



We are dedicated to excellence in electrical work



**Phase Selector DB's Double Door Senior**

**HSN Code 8537**

CODE	No. of Ways	STD.PACK	UNIT PRICE
SN-593	63/4/ TPN D.D WITH ROTARY (12+6)	2	7500.00
SN-594	63/6/ TPN D.D WITH ROTARY (18+6)	2	7956.00
SN-595	63/8/ TPN D.D WITH ROTARY (24+8)	1	8466.00
SN-596	63/12/ TPN D.D WITH ROTARY (36+12)	1	14790.00

**Phase Selector DB's Double Door Junior**

**HSN Code 8537**

CODE	No. of Ways	STD.PACK	UNIT PRICE
SN-597	40 / 4 / TPN D.D. WITHOUT ROTARY	3	2950.00
SN-598	63/ 4 / TPN D.D. WITH ROTARY	3	6300.00

**7 Segment (Phase Segregated) DB's**

**HSN Code 8537**

CODE	No. of Ways	STD.PACK	UNIT PRICE
SN-599	4 WAY	1	10395.00
SN-600	6 WAY	1	13125.00
SN-601	8 WAY	1	16800.00
SN-602	12 WAY	1	18900.00

**Vertical Db's - Double Door (VTPN) - MCB in Commer**

**HSN Code 8537**

CODE	No. of Ways	STD.PACK	UNIT PRICE
SN-603	4W VTPN DD (MCB) 8+12	1	6050.00
SN-604	6W VTPN DD (MCB) 8+18	1	7250.00
SN-605	8W VTPN DD (MCB) 8+24	1	9700.00
SN-606	12W VTPN DD (MCB) 8+36	1	13450.00

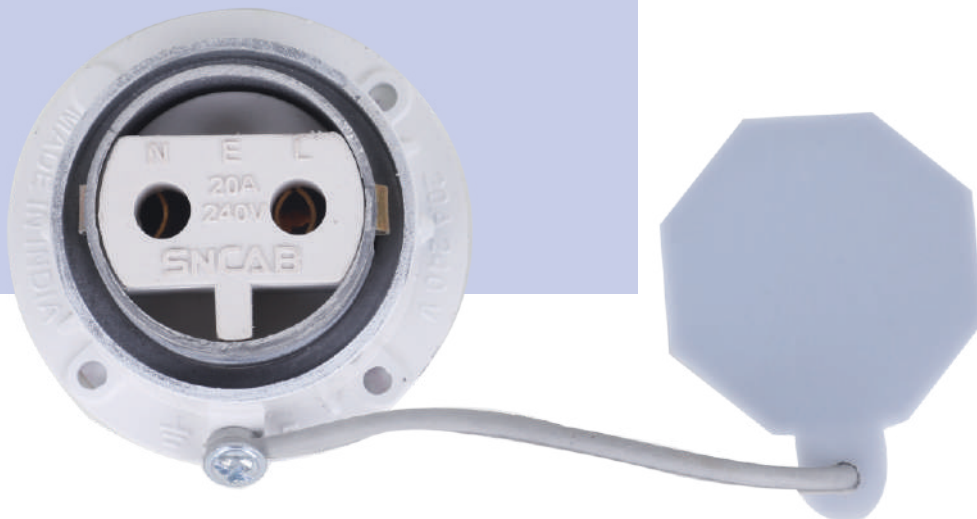
**Phase Changeover Box**

**HSN Code 8537**

CODE	No. of Ways	STD.PACK	UNIT PRICE
SN-607	40 A 1 WAY	20	510.00
SN-608	40 A 3 WAY	12	857.00



Smart People  
**Don't**  
Waste  
**Electricity**



### Plug & Sockets Enclosure



HSN Code 8538

CODE	Rating / AMPS	STD.PACK	UNIT PRICE
SN-609	20A SPN (AC Box)	24	788.00
SN-610	20A 2 POLE (AC Box)	24	862.00
SN-611	20A 3 PIN (AC Box)	10	1575.00
SN-612	32A 3 PIN (AC Box)	10	1970.00

### Metal Clad Plug & Socket



HSN Code 8536

CODE	Rating / AMPS	STD.PACK	UNIT PRICE
SN-613	20 AMP METAL CLAD PLUG (20A 2P + E)	120	166.00
SN-614	20 AMP METAL CLAD SOCKET (20A 2P + E)	120	166.00
SN-615	20 AMP 3 PIN METAL CLAD PLUG (20A 3P + E)	120	246.00
SN-616	20 AMP 3 PIN METAL CLAD SOCKET (20A 3P + E)	120	260.00
SN-617	32 AMP 3 PIN METAL CLAD PLUG (32A 3P + E)	120	479.00
SN-618	32 AMP 3 PIN METAL CLAD SOCKET (32A 3P + E)	120	532.00

### Cam Operated Rotary Switch



HSN Code 8536

CODE	Rating / AMPS	STD.PACK	UNIT PRICE
SN-619	32 AMPS	40	297.00
SN-620	40 AMPS	40	550.00
SN-621	63 AMPS	40	577.00
SN-622	100 AMPS	10	2640.00

### Socket (Enclosure)



HSN Code 8537

CODE	Rating / AMPS	STD.PACK	UNIT PRICE
SN-623	20 AMPS	50	235.00

### Meter Box



HSN Code 8537

CODE	No. of Ways	STD.PACK	UNIT PRICE
SN-624	SPN	3	2310.00
SN-625	TPN	3	3600.00

### Weather Proof Enclosure



HSN Code 8536

CODE	No. of Ways	STD.PACK	UNIT PRICE
SN-626	2 / 4 WAY IP 65 ENCLOSURE	30	1475.00

### Modular Ac Box



HSN Code 8536

CODE	No. of Ways	STD.PACK	UNIT PRICE
SN-627	4 MODULAR AC BOX	40	835.00

### Procelain Fuse Units



#### Fuse Units

HSN Code 8536

CODE	Rating / AMPS	STD.PACK	UNIT PRICE
SN-628	16 A 240 V FUSE UNIT	160	84.00
SN-629	16 A 415 V FUSE UNIT	72	144.00
SN-630	32 A 415 V FUSE UNIT	45	255.00
SN-631	32 A 240 V FUSE UNIT HANDLE TYPE	48	260.00
SN-632	63 A FUSE UNIT	24	576.00
SN-633	63 A FUSE UNIT HANDLE TYPE	20	600.00
SN-634	100 A FUSE UNIT	12	1032.00
SN-635	200 A FUSE UNIT	8	1980.00
SN-636	200 A FUSE UNIT WITH EXT. STRIP	8	2040.00
SN-637	300 A FUSE UNIT	6	2760.00
SN-638	300 FUSE UNIT WITH EXT. STRIP	6	3090.00
SN-639	500 FUSE UNIT PREMIUM	3	3840.00
SN-640	500 FUSE UNIT DELUXE	3	3480.00

### R/F SWITCHES WITH METAL HANDLE



#### R/F SWITCHES

HSN Code 8536

CODE	Rating / AMPS	STD.PACK	UNIT PRICE
SN-641	16A REVERSE FORWARD SWITCH	30	637.00
SN-642	32A REVERSE FORWARD SWITCH	20	1015.00

### Busbar Chambers - E Series



#### BUSBAR CHAMBER E-SERIES

HSN Code 8536

CODE	Rating / AMPS	STD.PACK	UNIT PRICE
SN-643	32 AMPS / 415 V FP	4	2965.00
SN-644	63 AMPS / 415 V FP	3	4580.00
SN-645	100 AMPS / 415 V FP	3	5930.00
SN-646	200 AMPS / 415 V FP	2	10240.00
SN-647	300 AMPS / 415 V FP	2	15630.00
SN-648	400 AMPS / 415 V FP	1	18595.00

### Busbar Chambers Economic



#### BUSBAR CHAMBER ECONOMIC

HSN Code 8536

CODE	Rating / AMPS	STD.PACK	UNIT PRICE
SN-649	32 AMPS / 415 V FP	4	2695.00
SN-650	63 AMPS / 415 V FP	3	4165.00
SN-651	100 AMPS / 415 V FP	3	5390.00
SN-652	200 AMPS / 415 V FP	2	9310.00
SN-653	300 AMPS / 415 V FP	2	14210.00
SN-654	400 AMPS / 415 V FP	1	16905.00

### REWIREABLE MAIN SWITCHES



#### MAIN SWITCHES

HSN Code 8536

CODE	Rating / AMPS	STD.PACK	UNIT PRICE
SN-655	16 AMPS 240 VOLTS DP	24	726.00
SN-656	32 AMPS 240 VOLTS DP	10	1875.00
SN-657	32 AMPS 415 VOLTS TPN	5	2810.00
SN-658	63 AMPS 415 VOLTS TPN	2	7200.00
SN-659	100 AMPS 415 VOLTS TPN	2	11400.00
SN-660	200 AMPS 415 VOLTS TPN	1	20040.00

### CHANGEOVER SWITCHES (OFF LOAD)



#### CHANGEOVER SWITCHES

HSN Code 8536

CODE	Rating / AMPS	STD.PACK	UNIT PRICE
SN-661	32 AMPS 240 VOLTS DP C/O	10	2000.00
SN-662	32 AMPS 415 VOLTS TP C/O	6	3010.00
SN-663	32 AMPS 415 VOLTS FP C/O	5	3500.00
SN-664	63 AMPS 415 VOLTS FP C/O	2	8125.00
SN-665	100 AMPS 415 VOLTS FP C/O	2	11750.00
SN-666	200 AMPS KNIFE TYPE C/O	1	24500.00

### Acrylic Door DB Boxes with Metal Base



#### ACRYLIC DOOR DB BOXES

HSN Code 8537

CODE	No. of Ways	STD.PACK	UNIT PRICE
SN-667	4 WAY SPN	12	1110.00
SN-668	6 WAY SPN	12	1800.00
SN-669	8 WAY SPN	12	1920.00
SN-670	12 WAY SPN	12	2340.00
SN-671	16 WAY SPN	6	2940.00

### Combi Bell Switch (IP55)



HSN Code 8537

CODE	No. of Ways	STD.PACK	UNIT PRICE
SN-672	COMBI BELL SWITCH 1M IP55 ENCLOSURE	90	432.00

### Mini MCB with Enclosure



HSN Code 8536

CODE	Rating / AMPS	STD.PACK	UNIT PRICE
SN-673	32A 2P MINI MCB WITH ENCLOSURE	100	565.00

### Terms & Conditions

- This price list supercedes all previous price list.
- Price is ex-godown and in Indian Rupees (₹) & GST as applicable.
- M.R.P. means maximum retail price.
- Princes are subject to revision without notice. All dispatch will be per price prevailing on date of invoice.
- Enclosures/Distribution Boards have the provision for fixing the component as shown in the photograph.
- Warranty Policy.
- All the products listed in the price list carry a warranty, against manufacturing defects for a period of 12 months form the date of manufacturing.
- The warranty is however subject to provision of proper usage, efficient maintenance and does not cover defect arising out inefficient maintenance, faulty operation and willful or accidental damage including non-performance which is cause by an event constituting force may cure, i.e. including (but not limited to) pandemic, fire, floods, administrative orders etc.
- SN Cab and / or manufacturer shall not be liable for any consequential loss, including personal injury or damages arising out of, or in connection with, defects in the Products including claim by third party.
- Proof of purchase to be retained to avail warranty.

**Coming Soon**



**LED**



**LED PANEL**



**LED FLOOD**



**STREET LIGHT**



**LED BATTEN**



# TOGETHER LETS MAKE A BEAUTIFUL WORLD



SNCAB INDUSTRIES PRIVATE LIMITED  
Chennai - 600 001.  
Email : enquiry@sncab.com  
Toll Free 1800-120-1899

[www.sncab.com](http://www.sncab.com)