

# PARÉ

**1<sup>ST</sup>** TIME  
IN THE WORLD



# EASY+

## WALL & CEILING SYSTEMS

## ABOUT US



**PARÉ** Innovations is a leading player in the building material segment, specializing in top-notch surfaces for ceilings, walls and facade systems.

---

At **PARÉ**, we take immense pride in being at the forefront of innovation, introducing ground breaking surfaces that have never been seen before in India. With our commercial base in Mumbai and our state-of-the-art manufacturing facility located near Vapi, Gujarat, **PARÉ** is strategically positioned to serve the needs of our valued customers. Our founders have deep roots in the building material industry, which has propelled us to become pioneers in the Innovative Products revolution.

## Manufacturing



PARÉ Innovations prides itself on its state-of-the-art manufacturing unit, which utilizes advanced European manufacturing technology to manufacture products of superior quality. It has launched quite a few products while being the first manufacturer in India for most of them.

PARÉ Innovations has been a pioneer in introducing many new products to the Indian market. PARÉ Innovations' commitment to quality and innovation has helped it become a leading player in various industries.



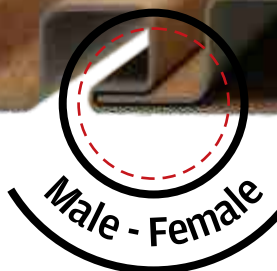
## First Time in the World

Discover a groundbreaking leap in interior design with our innovative Wall and Ceiling System - a cutting-edge solution that redefines the very essence of spatial aesthetics and functionality. This visionary creation marks a paradigm shift in the world of interior design, offering unprecedented versatility and adaptability to suit diverse tastes and design preferences.

# First Time in the World

## Advanced Interlocking

Our wall panels feature a one-of-a-kind interlocking system, ensuring a secure and tight fit that eliminates unsightly gaps and guarantees a flawless appearance for your walls. Experience the convenience and beauty of our advanced interlocking panels today.



**INTERLOCKING**

## Redefining Interior Design

## Innovative Wall and Ceiling System

Introducing a truly unique proposition that sets new standards in interior design. This revolutionary solution not only enhances the aesthetics of your space but also offers unparalleled benefits that no other system can match. Say goodbye to traditional plywood-based installations, **as our system directly screws to the wall**, saving you both time and money while creating a stunning visual impact.

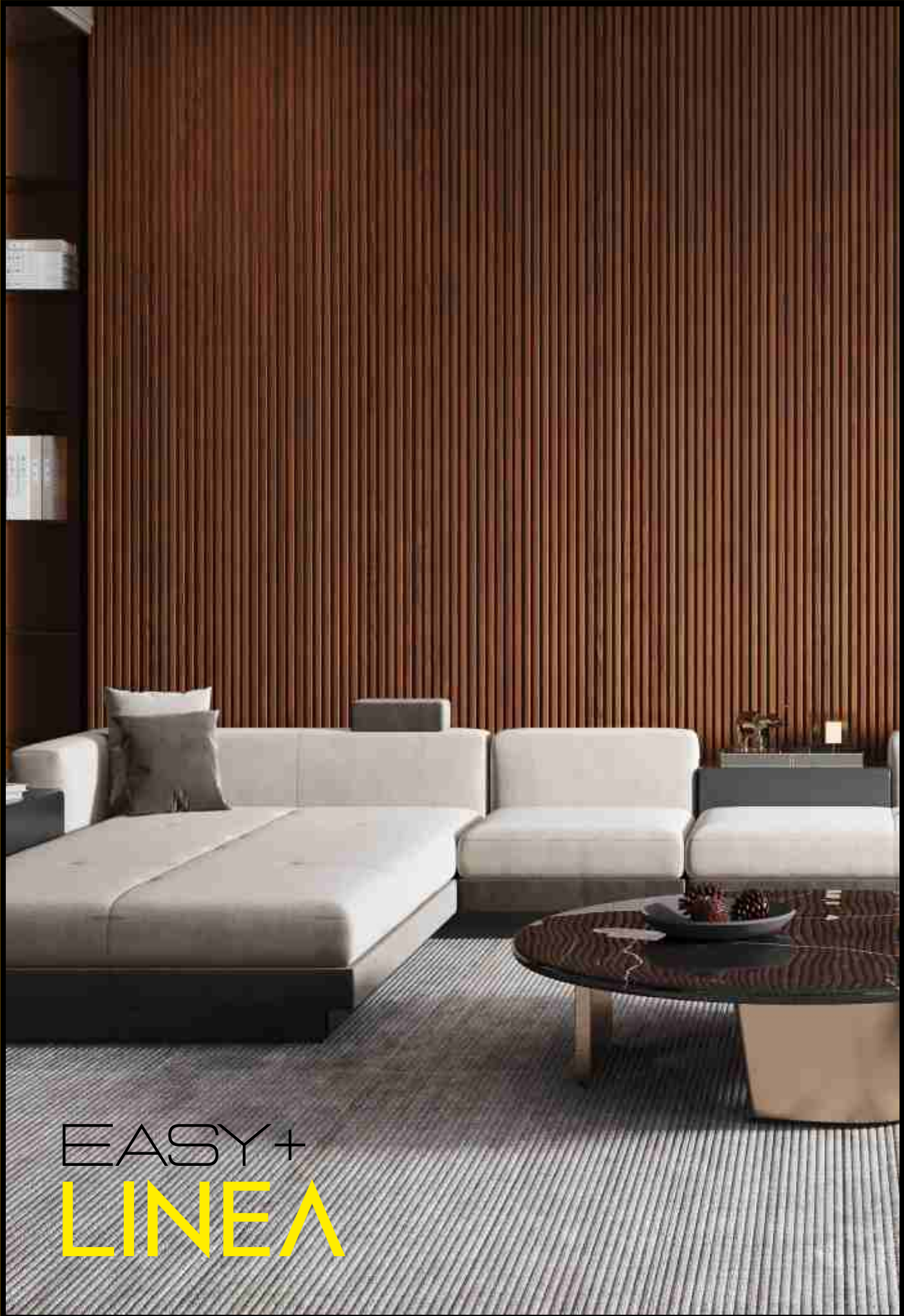


**Save Money on Plywood**

**No Plywood Required !**

Gone are the days when plywood was considered a necessity for wall and ceiling installations. Our innovative system eliminates the need for plywood altogether, significantly reducing material costs and minimizing environmental impact. The absence of plywood not only cuts down on expenses but also promotes sustainable interior design, aligning your space with modern eco-conscious values.





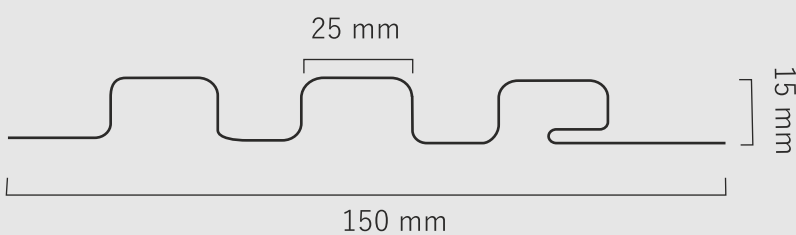
EASY+  
LINEA

# EASY+ LINEA

**\*SIZING IN MM\***



Transform your space into a masterpiece with Linea Shape Wall Panels. Embrace the art of elegant design as sleek lines harmonize, creating a stunning backdrop that captures the essence of modern sophistication.



CODE : 107



EASY+  
PYRAMID

# EASY+ PYRAMID

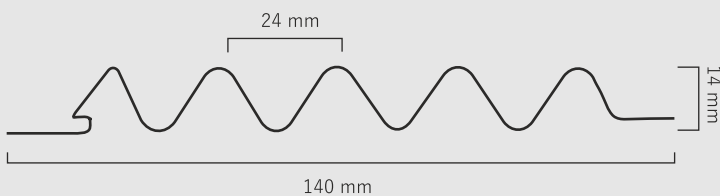
**\*SIZING IN MM\***

140 mm

3060 mm



Transform your space with the timeless allure of pyramid shape wall panels, where geometric elegance converges with architectural intrigue, igniting a symphony of form and function that captivates the eye. Let each panel's meticulously crafted angles and shadows breathe life into your surroundings, showcasing the boundless potential of geometric artistry.



**CODE : 108**



EASY+  
ARCH

# EASY+ ARCH

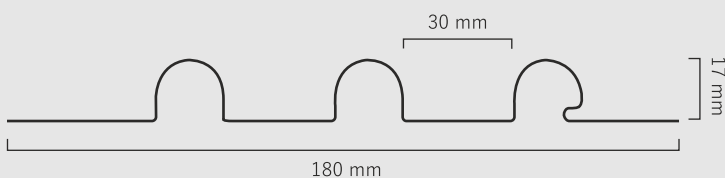
**\*SIZING IN MM\***

180 mm



3060 mm

EASY+ ARCH Panels have been designed to prioritize a streamlined and straightforward structure, seamlessly integrating them into the EASY+ System. The circular shape of the panels not only adds visual appeal but also plays a critical role in enhancing the overall aesthetic and functionality.



CODE : 109

# FEATURES



EASY INSTALLATION



RECYCLABLE



ADVANCED INTERLOCKING



SEAMLESS LOOK



TERMITE & RUST PROOF



WARRANTY



ANTI BACTERIAL



FIRE RETARDANT

# SHADES

## NATURE COLLECTION



OAK WOOD OCRE



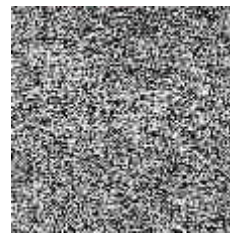
SPICED WALNUT



MAHOGANY



ROYAL NUT



ASH WOOD GREY



BEECH WOOD

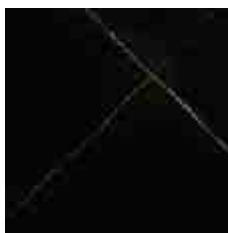
## MARBLE COLLECTION



ARMANI GREY



STATUARIO



PORTORO



GOLD



SILVER



COPPER

## METALLIC COLLECTION

## FABRIC COLLECTION



PEARL

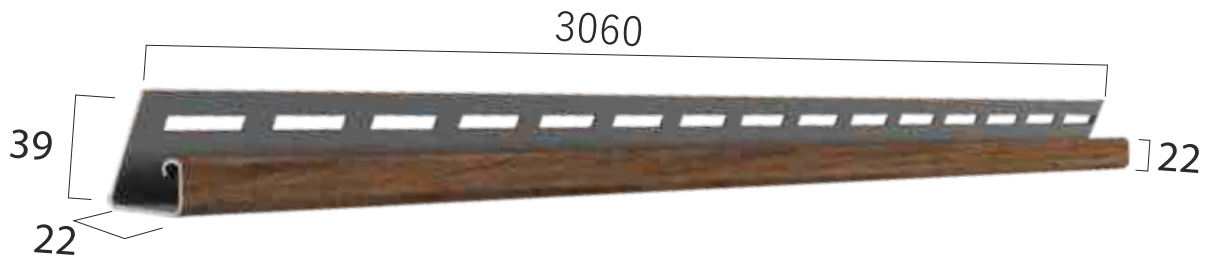
# SHADES

# TRIMS

## L Trim



## J Trim Large



## J Trim Pro





**VERSATILITY**

# EASY TO INSTALL SYSTEM

## Versatility

Discover the power of versatility as you seamlessly combine an array of exquisite wall panels, allowing you to effortlessly transform any space into a breathtaking masterpiece that reflects your unique style and vision.

With endless possibilities at your fingertips, unlock the true potential of design by harmonizing various products to create a one-of-a-kind aesthetic experience.

EASY+  
LINEA

EASY+  
PYRAMID

EASY+  
ARCH





**Introducing Pastel Collection :**

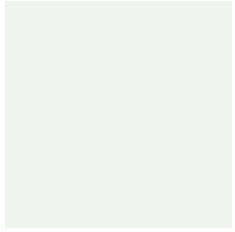
## **Redefining Comfort and Elegance in Your Space**

A pioneering range that introduces a never-before-seen tactile experience to your living spaces. As the first of its kind in the world, this collection is crafted to provide a touch that feels soft and inviting, elevating your interior design to new heights of comfort



# PASTEL SHADES

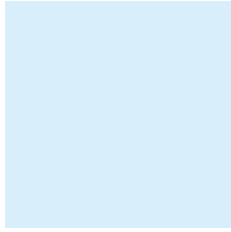
## NATURE COLLECTION



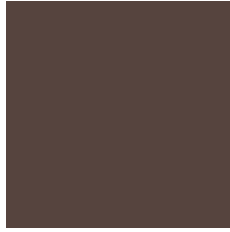
SNOW WHITE



STEEL BLUE



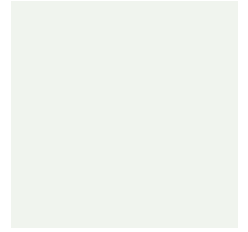
SKY BLUE



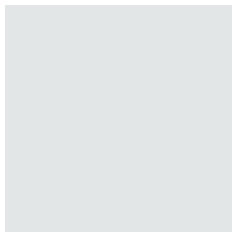
MOCHA



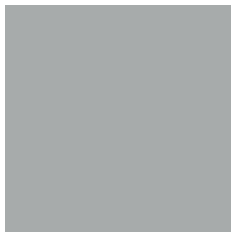
FOREST GREEN



MINT GREEN



LIGHT GREY



CLOUD GREY

# NEW | SHADES |

## Plain Vibrant Shades :

### A Symphony of Colours

Drawing inspiration from the beauty of nature and contemporary aesthetics, our Soft Touch Collection showcases an exquisite array of plain vibrant shades. These colours evoke a sense of tranquillity and energy, allowing you to create a harmonious ambiance that resonates with your style. Whatever your design vision, these shades seamlessly blend with any interior, transforming it into a haven of comfort and elegance.



# INTRODUCING SHEET

A Revolutionary Breakthrough in Interior Design



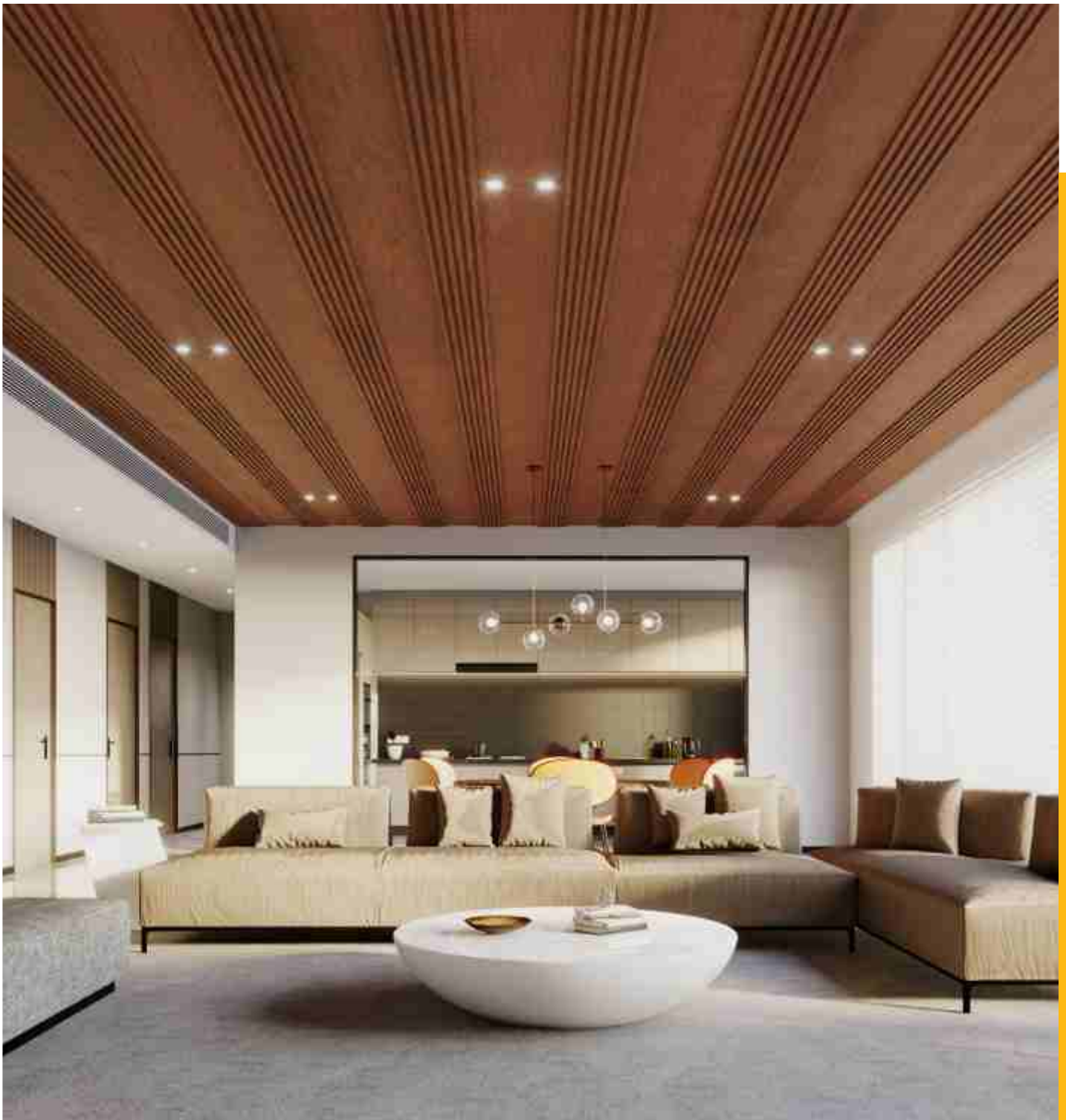
Are you ready to transform your living spaces with a revolutionary interior design solution? Say hello to Sheet - the first-of-its-kind innovation that is set to redefine the way you envision and implement interior design. This cutting-edge product offers a plethora of advantages, making it a game-changer in the world of interior designing.



**MIX & MATCH**

**SHEET with EASY+ Panels**

to create your dream aesthetic



## What is a Sheet and Its Usage ?

Sheet is an innovative interior design material designed to enhance aesthetics, functionality, and versatility in any space. It comes in large, sleek panels that seamlessly interlock, providing a smooth and continuous surface. The material is carefully engineered to deliver exceptional performance and unmatched visual appeal.

## Where to Use the Sheet ?

The versatility of Sheet knows no bounds. Whether you're decorating your home, office, retail space, or any other interior environment, Sheet is the perfect solution. It can be used for various applications, including wall coverings, ceiling treatments, room dividers, decorative facades, and more. Its adaptability ensures that you can bring your creative visions to life with ease.



## Why Use Sheet ?

Sheet offers an array of compelling reasons to choose it as your preferred interior design solution :

### Unmatched Aesthetics:

With its sleek and modern design, Sheet elevates the visual appeal of any space, adding a touch of sophistication and elegance.

### Seamless Interlocking Panels:

The interlocking panels create a seamless surface that eliminates unsightly seams, ensuring a clean and contemporary finish.

### Durable and Long - Lasting:

The sheet is engineered to withstand wear and tear, ensuring that it retains its beauty for years to come.

### Easy Installation:

Installing the sheet is a breeze, thanks to its interlocking mechanism. This simplifies the installation process and reduces time and effort significantly.

### Customization Options:

Available in a wide range of colors, patterns, and textures, Sheet offers endless possibilities for customization, allowing you to express your unique style.

### Space Optimization:

Sheet's slim profile maximizes space utilization, making it ideal for areas where space-saving is essential.

### Maintenance - Friendly:

Cleaning and maintaining Sheet is hassle-free, making it a practical choice for busy environments.

# INTRODUCING DUAL TONE

DOUBLE BLACK ( DB )



We proudly present the world's first-ever Highlighter Shade Wall and Ceiling Panels, a marvel that will transform your living spaces into artistic masterpieces. Say goodbye to mundane walls and ceilings as you welcome a new era of creativity, aesthetics, and functionality.

**NEW**

DUAL  
TONE



LINEA



ARCH

## Why Use DB :

### Unveiling the Highlights :

#### Unique Highlighter Shade :

Imagine walls and ceilings adorned with elegant grooves in between, creatively enhanced with a stunning highlighter shade. This eye-catching feature instantly captures attention, making a bold design statement that complements any interior theme. Whether it's a residential living room, a chic office space, or a luxurious hotel lobby, these panels will redefine the way you perceive interior decor.

#### Seamless Grooves :

The perfectly crafted grooves between the panels add a touch of sophistication, creating a sense of depth and texture that delights the senses. Each groove is meticulously designed to ensure a seamless flow, leaving no room for imperfections. The result is an immaculate surface that exudes elegance and elevates your space to a whole new level of grandeur.

#### Versatile Application :

Our highlighter shade wall and ceiling panels are not limited to a specific style or ambiance. They adapt effortlessly to various interior design themes, from modern and minimalistic to classical and ornate. Whatever your vision, these panels will bring it to life with finesse and panache.

#### No Ply Required :

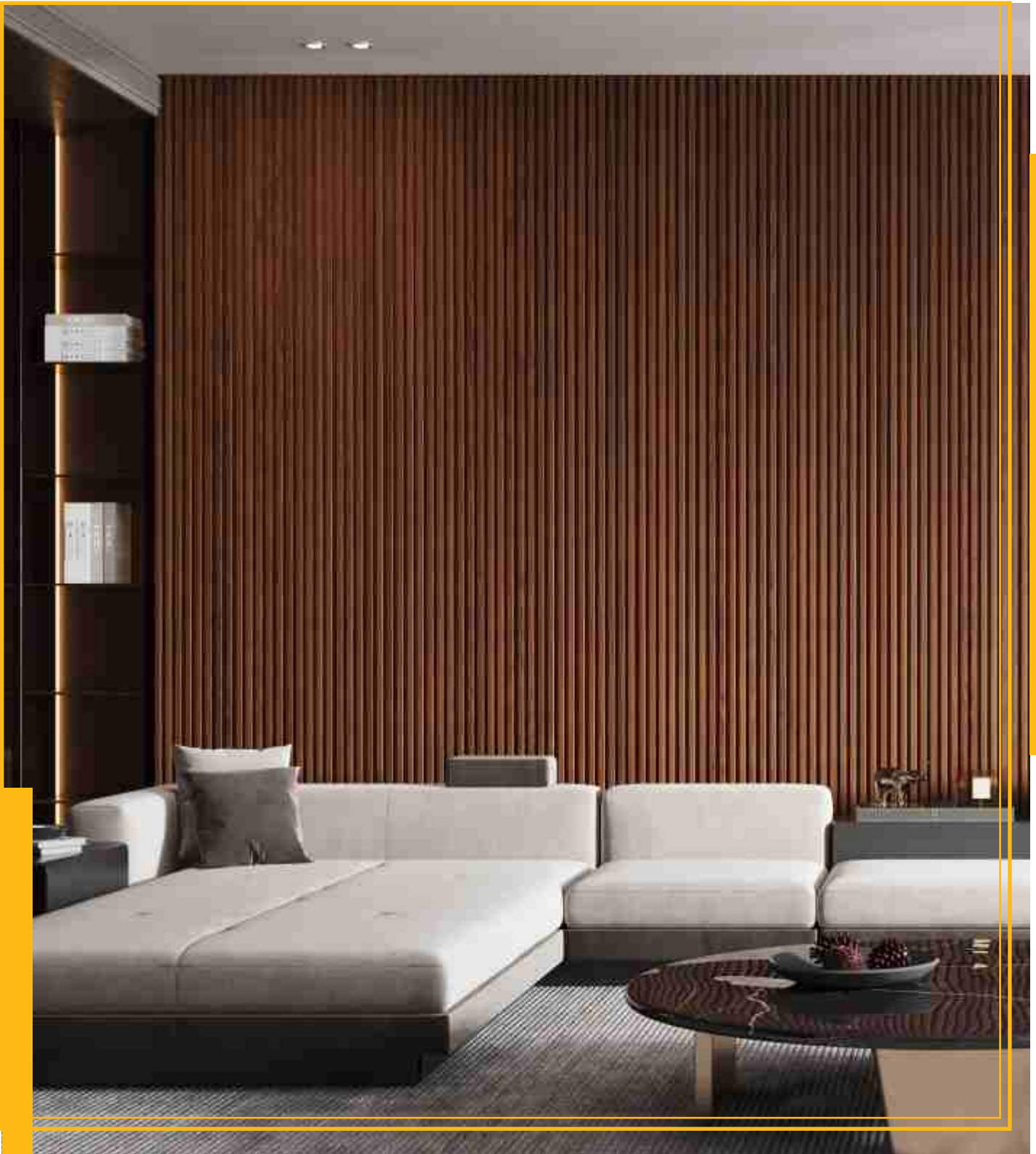
Bid farewell to conventional plywood installations that consume time and resources. Our innovative panels are engineered with cutting-edge materials that do away with the need for plywood backing. The panels are sturdy, durable, and offer unmatched structural integrity, ensuring a hassle-free installation process that saves time and money.

#### Sustainable Design :

Embracing eco-friendliness and sustainability, our panels are manufactured with environmentally responsible materials. By choosing these panels, you contribute to a greener future without compromising on quality or style.

#### Customization Options :

Embracing eco-friendliness and sustainability, our panels are manufactured with environmentally responsible materials. By choosing these panels, you contribute to a greener future without compromising on quality or style. colours, patterns, and sizes, allowing you to customize the design according to your preferences.



## INNOVATIVE SURFACES

WALL | CEILING | FACADE

 - @pareindia  - fb.com/pareinnov

 - www.pareindia.com



**PARÉ INNOVATIONS PVT. LTD.**

**Corporate Office :**

101-103, Jai Commercial Complex, Cadbury Junction, Thane (W), 400601, Maharashtra, INDIA.

# TECHNICAL DECLARATION

Sheet offers an array of compelling reasons to choose it as your preferred interior design solution :

**IMPACT RESISTANCE :** \_\_\_\_\_ ●

NO DEFORMATION OBSERVED. (TESTED AT 50 LBS)

**TENSILE STRENGTH, MPA :** \_\_\_\_\_ ●

>37.0

**TENSILE MODULUS, MPA :** \_\_\_\_\_ ●

>2000

**SURFACE DISTORTION :** \_\_\_\_\_ ●

NONE AT 120F

**SQUARENESS :** \_\_\_\_\_ ●

<1/8" OF SQUARE

**LENGTH :** \_\_\_\_\_ ●

WITHIN 1/4" OF SPECIFICATION

**LOCK CONTROL :** \_\_\_\_\_ ●

COMPLIES

**COLOR CHANGE :** \_\_\_\_\_ ●

< 2 GRAYSCALES

(16 HRS. UNDER 1200W/M2 UV RADIATION AT 50 DEGREES)