

RESPONSIVE

We listen. We're responsive.

STONES EDGE LUXURY VINYL TILE



2.0 mm | 24" x 24" | 16 pc / box | 64 sq.ft / box

STONE EDGE®
LUXURY VINYL TILE



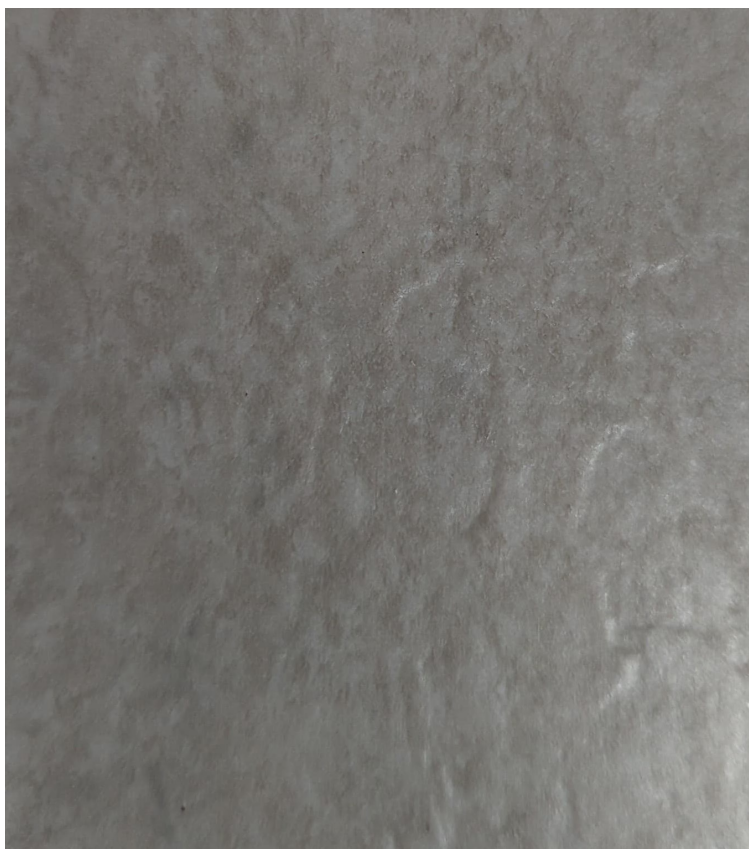
Superior Scratch
& Stain Resistant



Zero
Maintenance



Easy
Cleaning



STN-611



STN-612



STN-613



STN-614

2.0 mm | 24" x 24" | 16 pc / box | 64 sq.ft / box



Superior Scratch
& Stain Resistant



Zero
Maintenance



Easy
Cleaning



M5001



M5002



M5003



M5004

APPLICATIONS



Offices



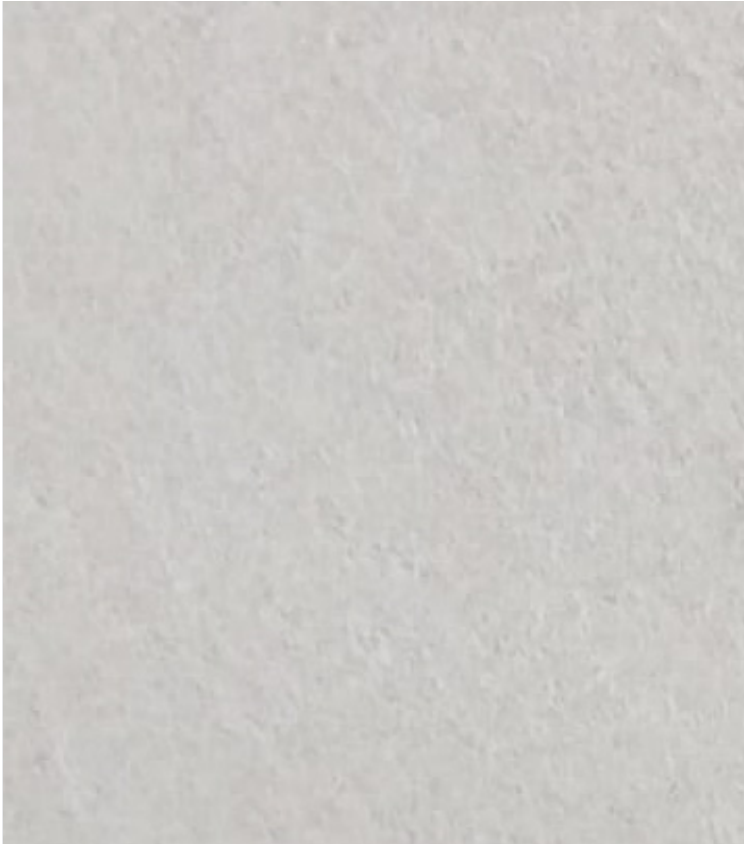
Residential



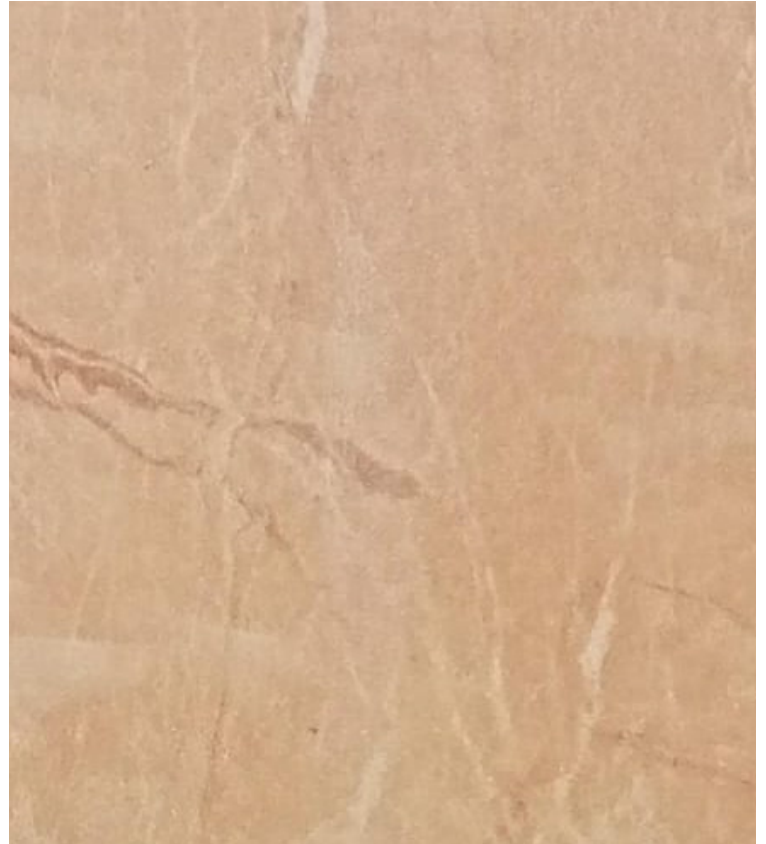
Retail



Hospitality



M5005



M5006



SLD-01



SLD-02

Luxury Vinyl Planks For Light To Heavy Commercial | PUR Polyurethane Reinforcement | Product Standard: ISO 10582

| CERTIFICATION & CLASSIFICATION | STANDARD | IMPACT STONE EDGE |
|--------------------------------|--------------|---|
| TYPE OF FLOOR COVERING | ISO 10582 | LUXURY VINYL PLANK |
| CE CERTIFICATION | EN 14041 | Yes |
| CLASSIFICATION | EN ISO 10874 | Commercial : 31 Heavy Commercial : 34 |

| TECHNICAL CHARACTERISTICS | STANDARDS | IMPACT STONE EDGE |
|---------------------------|--------------------------------------|---|
| TOTAL THICKNESS | EN ISO 2436 (EN 428) | 2.0 MM (2.5mm / 3.0mm AVL on demand) |
| WEAR LAYER THICKNESS | EN ISO 24340 (EN 429) | 0.30 MM (0.50 / 0.70 AVL on demand) |
| SURFACE TREATMENT | UV TREATED | PUR |
| TOTAL WEIGHT | EN ISO 23997 (EN 430) | 3300 g/m ² |
| WEAR LAYER BINDER CONTENT | ISO 10582 | TYPE I |
| FORM OF DELIVERY | EN ISO 24342 (EN 427) Planks box | 24" X 24" 16 Tiles / Carton = 64 SF |

| TECHNICAL PERFORMANCES | STANDARDS | IMPACT STONE EDGE |
|-------------------------|-------------------------|--|
| DIMENSIONAL STABILITY | EN ISO 23999 (EN 434) | Pass |
| REACTION TO FIRE | EN 13501 - 1 | Bfl- S1 glued over A2fl substrate (concrete) |
| RESIDUAL INDENTATION | EN ISO 24343-1 (EN 433) | Pass |
| FURNITURE LEG | EN 424 | No Damage |
| CASTOR CHAIR | EN ISO 4918 (EN 425) | No Damage |
| CURL RESULTANT TO HEAT | EN ISO 23999 (434) | Pass |
| THERMAL RESISTANCE | EN ISO 10456 | 0.07 M2 K/W |
| LIGHT FASTNESS | EN ISO 105 - B02 | >Grade 6 Pass |
| RESISTANCE TO CHEMICALS | EN ISO 26987 (EN423) | Good Resistance Pass |
| SLIP RESISTANCE | DIN51130 EN 13893 | R9 Class DS |
| ELECTRICAL PROPERTIES | EN 1815 EN 1081 | <2 kV on concrete R1 > 10 ¹⁰ Ω |



ISO 9001
ISO 14001
ISO 18001

